



LABORATORY GROWN DIAMOND REPORT

July 28, 2025
 IGI Report Number **LG724593591**
 Description **LABORATORY GROWN DIAMOND**
 Shape and Cutting Style **PEAR BRILLIANT**
 Measurements **7.65 X 5.02 X 3.14 MM**

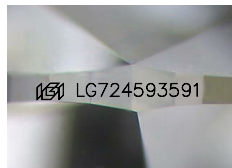
GRADING RESULTS

Carat Weight **0.72 CARAT**
 Color Grade **D**
 Clarity Grade **INTERNALLY FLAWLESS**

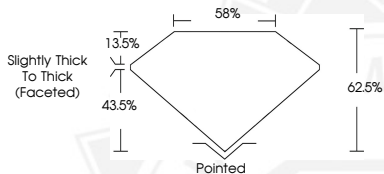
ADDITIONAL GRADING INFORMATION

Polish **VERY GOOD**
 Symmetry **VERY GOOD**
 Fluorescence **NONE**
 Inscription(s) **IGI LG724593591**

Comments: As Grown - No indication of post-growth treatment.
 This Laboratory Grown Diamond was created by High Pressure High Temperature (HPHT) growth process.
 Type II



Sample Image Used



July 28, 2025
 IGI Report Number **LG724593591**
PEAR BRILLIANT
LABORATORY GROWN DIAMOND
7.65 X 5.02 X 3.14 MM
 Carat Weight **0.72 CARAT**
 Color Grade **D**
 Clarity Grade **I.F.**
 Polish **VERY GOOD**
 Symmetry **VERY GOOD**
 Fluorescence **NONE**
 Inscription(s) **IGI LG724593591**

Comments: As Grown - No indication of post-growth treatment. This Laboratory Grown Diamond was created by High Pressure High Temperature (HPHT) growth process. Type II



July 28, 2025
 IGI Report Number **LG724593591**
PEAR BRILLIANT
LABORATORY GROWN DIAMOND
7.65 X 5.02 X 3.14 MM
 Carat Weight **0.72 CARAT**
 Color Grade **D**
 Clarity Grade **I.F.**
 Polish **VERY GOOD**
 Symmetry **VERY GOOD**
 Fluorescence **NONE**
 Inscription(s) **IGI LG724593591**

Comments: As Grown - No indication of post-growth treatment. This Laboratory Grown Diamond was created by High Pressure High Temperature (HPHT) growth process. Type II

THIS DOCUMENT WAS PRODUCED WITH THE FOLLOWING SECURITY MEASURES: SPECIAL DOCUMENT PAPER, INK SCREENS, WATERMARK, BACKGROUND DESIGNS, HOLOGRAM AND OTHER SECURITY FEATURES NOT LISTED AND DO EXCEED DOCUMENT SECURITY INDUSTRY GUIDELINES.