



ELECTRONIC COPY

LG724588686
Report verification at igi.org



July 26, 2025
IGI Report Number **LG724588686**
Description **LABORATORY GROWN DIAMOND**
Shape and Cutting Style **CUT CORNERED
RECTANGULAR MODIFIED
BRILLIANT**
Measurements **9.77 X 7.18 X 4.77 MM**
GRADING RESULTS
Carat Weight **3.04 CARATS**
Color Grade **D**
Clarity Grade **INTERNALLY FLAWLESS**

LABORATORY GROWN DIAMOND REPORT

July 26, 2025
IGI Report Number **LG724588686**
Description **LABORATORY GROWN DIAMOND**
Shape and Cutting Style **CUT CORNERED RECTANGULAR
MODIFIED BRILLIANT**
Measurements **9.77 X 7.18 X 4.77 MM**

GRADING RESULTS

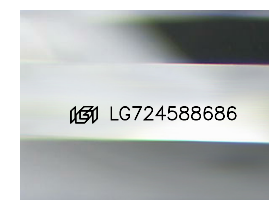
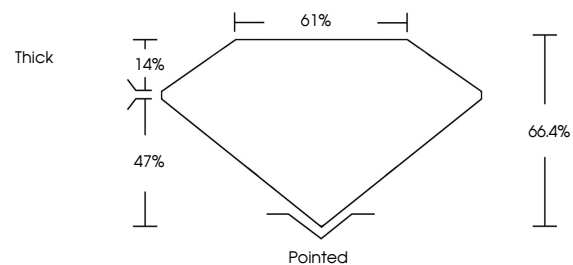
Carat Weight **3.04 CARATS**
Color Grade **D**
Clarity Grade **INTERNALLY FLAWLESS**

ADDITIONAL GRADING INFORMATION

Polish **EXCELLENT**
Symmetry **EXCELLENT**
Fluorescence **NONE**
Inscription(s) **IGI LG724588686**

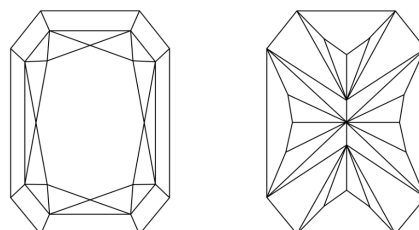
Comments: This Laboratory Grown Diamond was created by Chemical Vapor Deposition (CVD) growth process.
Type IIa

PROPORTIONS



Sample Image Used

CLARITY CHARACTERISTICS



KEY TO SYMBOLS

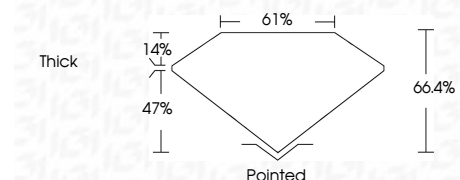
Red symbols indicate internal characteristics.
Green symbols indicate external characteristics.

COLOR

D E F G H I J Faint Very Light Light

CLARITY

IF	VS ¹⁻²	VS ¹⁻²	SI ¹⁻²	I ¹⁻³
Internally Flawless	Very Very Slightly Included	Very Slightly Included	Slightly Included	Included



ADDITIONAL GRADING INFORMATION

Polish **EXCELLENT**
Symmetry **EXCELLENT**
Fluorescence **NONE**
Inscription(s) **IGI LG724588686**
Comments: This Laboratory Grown Diamond was created by Chemical Vapor Deposition (CVD) growth process.
Type IIa



IGI



July 26, 2025
IGI Report No LG724588686
CUT CORNERED RECT. MODIFIED BRILLIANT
9.77 X 7.18 X 4.77 MM
3.04 CARATS
D
LF
66.4%
61%
Thick
Pointed
EXCELLENT
EXCELLENT
NONE
IGI LG724588686

Comments: This Laboratory Grown Diamond was created by Chemical Vapor Deposition (CVD) growth process.
Type IIa