



INTERNATIONAL GEMOLOGICAL INSTITUTE

LABORATORY GROWN DIAMOND REPORT

July 29, 2025
IGI Report Number **LG724577516**
Description **LABORATORY GROWN DIAMOND**
Shape and Cutting Style **PEAR BRILLIANT**
Measurements **7.17 X 4.55 X 2.95 MM**

GRADING RESULTS

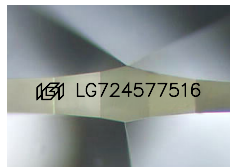
Carat Weight **0.56 CARAT**
Color Grade **D**
Clarity Grade **VVS 1**

ADDITIONAL GRADING INFORMATION

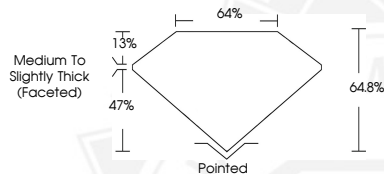
Polish **VERY GOOD**
Symmetry **EXCELLENT**
Fluorescence **NONE**
Inscription(s) **IGI LG724577516**

Comments: This Laboratory Grown Diamond was created by Chemical Vapor Deposition (CVD) growth process. Type IIa

ELECTRONIC COPY



Sample Image Used



July 29, 2025

IGI Report Number **LG724577516**

PEAR BRILLIANT

LABORATORY GROWN DIAMOND

7.17 X 4.55 X 2.95 MM

Carat Weight **0.56 CARAT**

Color Grade **D**

Clarity Grade **VVS 1**

Polish **VERY GOOD**

Symmetry **EXCELLENT**

Fluorescence **NONE**

Inscription(s) **IGI LG724577516**

Comments: This Laboratory Grown Diamond was created by Chemical Vapor Deposition (CVD) growth process. Type IIa



July 29, 2025

IGI Report Number **LG724577516**

PEAR BRILLIANT

LABORATORY GROWN DIAMOND

7.17 X 4.55 X 2.95 MM

Carat Weight **0.56 CARAT**

Color Grade **D**

Clarity Grade **VVS 1**

Polish **VERY GOOD**

Symmetry **EXCELLENT**

Fluorescence **NONE**

Inscription(s) **IGI LG724577516**

Comments: This Laboratory Grown Diamond was created by Chemical Vapor Deposition (CVD) growth process. Type IIa



THIS DOCUMENT WAS PRODUCED WITH THE FOLLOWING SECURITY MEASURES: SPECIAL DOCUMENT PAPER, INK SCREENS, WATERMARK, BACKGROUND DESIGNS, HOLOGRAM AND OTHER SECURITY FEATURES NOT LISTED AND DO EXCEED DOCUMENT SECURITY INDUSTRY GUIDELINES.

For terms & conditions and to verify this report, please visit www.igi.org