



ELECTRONIC COPY

LG724573424
Report verification at igi.org



August 11, 2025
IGI Report Number **LG724573424**
Description **LABORATORY GROWN DIAMOND**
Shape and Cutting Style **EMERALD CUT**
Measurements **11.11 X 7.44 X 4.64 MM**
GRADING RESULTS
Carat Weight **4.05 CARATS**
Color Grade **FANCY LIGHT YELLOW**
Clarity Grade **SI 1**

LABORATORY GROWN DIAMOND REPORT

August 11, 2025
IGI Report Number **LG724573424**
Description **LABORATORY GROWN DIAMOND**
Shape and Cutting Style **EMERALD CUT**
Measurements **11.11 X 7.44 X 4.64 MM**

GRADING RESULTS

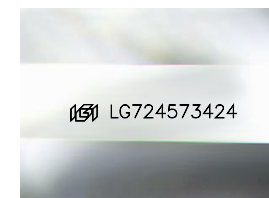
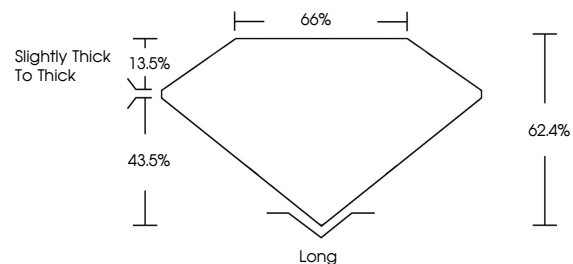
Carat Weight **4.05 CARATS**
Color Grade **FANCY LIGHT YELLOW**
Clarity Grade **SI 1**

ADDITIONAL GRADING INFORMATION

Polish **EXCELLENT**
Symmetry **EXCELLENT**
Fluorescence **VERY SLIGHT**
Inscription(s) **IGI LG724573424**

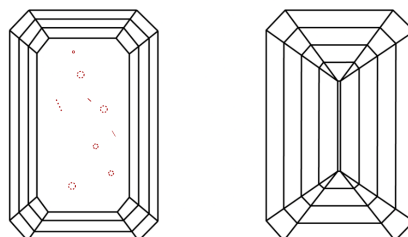
Comments: This Laboratory Grown Diamond was created by Chemical Vapor Deposition (CVD) growth process. Indications of post-growth treatment.

PROPORTIONS



Sample Image Used

CLARITY CHARACTERISTICS



KEY TO SYMBOLS

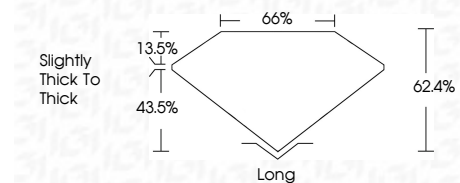
Red symbols indicate internal characteristics.
Green symbols indicate external characteristics.

COLOR

D E F G H I J Faint Very Light Light

CLARITY

IF	VS ¹⁻²	VS ¹⁻²	SI ¹⁻²	I ¹⁻³
Internally Flawless	Very Very Slightly Included	Very Slightly Included	Slightly Included	Included



ADDITIONAL GRADING INFORMATION

Polish **EXCELLENT**
Symmetry **EXCELLENT**
Fluorescence **VERY SLIGHT**
Inscription(s) **IGI LG724573424**
Comments: This Laboratory Grown Diamond was created by Chemical Vapor Deposition (CVD) growth process. Indications of post-growth treatment.



IGI



August 11, 2025
IGI Report No LG724573424
EMERALD CUT
4.05 CARATS
Carat Weight
Color Grade **FANCY LIGHT YELLOW**
Clarity Grade **SI 1**
Depth **62.4%**
Table **65%**
Girdle **Slightly thick to thick**
Culet **Long**
Polish **EXCELLENT**
Symmetry **EXCELLENT**
Fluorescence **VERY SLIGHT**
Inscription(s) **IGI LG724573424**
Comments: This Laboratory Grown Diamond was created by Chemical Vapor Deposition (CVD) growth process. Indications of post-growth treatment.