



ELECTRONIC COPY

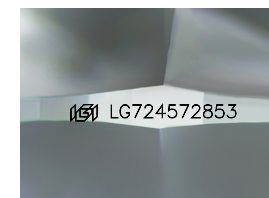
LG724572853
Report verification at igi.org



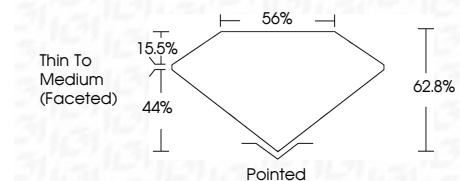
August 5, 2025
IGI Report Number **LG724572853**
Description **LABORATORY GROWN DIAMOND**
Shape and Cutting Style **ROUND MODIFIED BRILLIANT**
Measurements **6.83 - 6.85 X 4.30 MM**

GRADING RESULTS

Carat Weight **1.35 CARAT**
Color Grade **FANCY INTENSE PINK**
Clarity Grade **VS 2**



Sample Image Used



ADDITIONAL GRADING INFORMATION

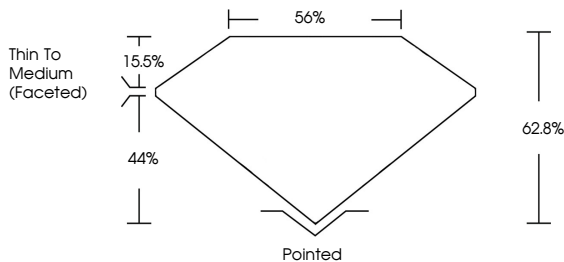
Polish **EXCELLENT**
Symmetry **EXCELLENT**
Fluorescence **SLIGHT**
Inscription(s) **(IGI) LG724572853**
Comments: This Laboratory Grown Diamond was created by Chemical Vapor Deposition (CVD) growth process. Indications of post-growth treatment.



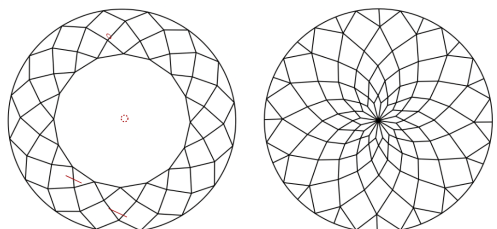
August 5, 2025
IGI Report No LG724572853
ROUND MODIFIED BRILLIANT
6.83 - 6.85 X 4.30 MM
1.35 CARAT
FANCY INTENSE PINK
VS 2
62.8%
56%
Thin To Medium (Faceted)
Pointed
EXCELLENT
EXCELLENT
SLIGHT
(IGI) LG724572853
Comments: This Laboratory Grown Diamond was created by Chemical Vapor Deposition (CVD) growth process. Indications of post-growth treatment.

August 5, 2025
IGI Report Number **LG724572853**
Description **LABORATORY GROWN DIAMOND**
Shape and Cutting Style **ROUND MODIFIED BRILLIANT**
Measurements **6.83 - 6.85 X 4.30 MM**
GRADING RESULTS
Carat Weight **1.35 CARAT**
Color Grade **FANCY INTENSE PINK**
Clarity Grade **VS 2**
ADDITIONAL GRADING INFORMATION
Polish **EXCELLENT**
Symmetry **EXCELLENT**
Fluorescence **SLIGHT**
Inscription(s) **(IGI) LG724572853**
Comments: This Laboratory Grown Diamond was created by Chemical Vapor Deposition (CVD) growth process. Indications of post-growth treatment.

PROPORTIONS



CLARITY CHARACTERISTICS



KEY TO SYMBOLS

Red symbols indicate internal characteristics.
Green symbols indicate external characteristics.

COLOR

D	E	F	G	H	I	J	Faint	Very Light	Light
---	---	---	---	---	---	---	-------	------------	-------

CLARITY

IF	VS ¹⁻²	VS ¹⁻²	SI ¹⁻²	I ¹⁻³
Internally Flawless	Very Very Slightly Included	Very Slightly Included	Slightly Included	Included

