



# INTERNATIONAL GEMOLOGICAL INSTITUTE

ELECTRONIC COPY

## LABORATORY GROWN DIAMOND REPORT

July 31, 2025  
IGI Report Number **LG724565964**  
Description **LABORATORY GROWN DIAMOND**  
Shape and Cutting Style **ROUND BRILLIANT**  
Measurements **3.90 - 3.94 X 2.37 MM**

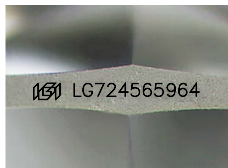
### GRADING RESULTS

Carat Weight **0.22 CARAT**  
Color Grade **FANCY VIVID GREEN**  
Clarity Grade **VS 2**  
Cut Grade **IDEAL**

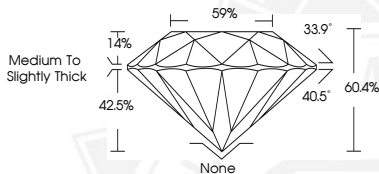
### ADDITIONAL GRADING INFORMATION

Polish **VERY GOOD**  
Symmetry **VERY GOOD**  
Fluorescence **NONE**  
Inscription(s) **IGI LG724565964**

Comments: This Laboratory Grown Diamond was created by High Pressure High Temperature (HPHT) growth process. Indications of post-growth treatment.



Sample Image Used



July 31, 2025

IGI Report Number **LG724565964**  
**ROUND BRILLIANT**  
**LABORATORY GROWN DIAMOND**  
**3.90 - 3.94 X 2.37 MM**

Carat Weight **0.22 CARAT**  
Color Grade **FANCY VIVID GREEN**  
Clarity Grade **VS 2**  
Cut Grade **IDEAL**  
Polish **VERY GOOD**  
Symmetry **VERY GOOD**  
Fluorescence **NONE**  
Inscription(s) **IGI LG724565964**

Comments: This Laboratory Grown Diamond was created by High Pressure High Temperature (HPHT) growth process. Indications of post-growth treatment.



July 31, 2025

IGI Report Number **LG724565964**  
**ROUND BRILLIANT**  
**LABORATORY GROWN DIAMOND**  
**3.90 - 3.94 X 2.37 MM**

Carat Weight **0.22 CARAT**  
Color Grade **FANCY VIVID GREEN**  
Clarity Grade **VS 2**  
Cut Grade **IDEAL**  
Polish **VERY GOOD**  
Symmetry **VERY GOOD**  
Fluorescence **NONE**  
Inscription(s) **IGI LG724565964**

Comments: This Laboratory Grown Diamond was created by High Pressure High Temperature (HPHT) growth process. Indications of post-growth treatment.



THIS DOCUMENT WAS PRODUCED WITH THE FOLLOWING SECURITY MEASURES: SPECIAL DOCUMENT PAPER, INK SCREENS, WATERMARK, BACKGROUND DESIGNS, HOLOGRAM AND OTHER SECURITY FEATURES NOT LISTED AND DO EXCEED DOCUMENT SECURITY INDUSTRY GUIDELINES.

For terms & conditions and to verify this report, please visit [www.igi.org](http://www.igi.org)