



**ELECTRONIC COPY**

LG724564318  
Report verification at igi.org



August 11, 2025  
IGI Report Number **LG724564318**  
Description **LABORATORY GROWN DIAMOND**  
Shape and Cutting Style **CUSHION MIXED CUT**  
Measurements **12.12 X 8.35 X 5.19 MM**  
**GRADING RESULTS**  
Carat Weight **5.01 CARATS**  
Color Grade **FANCY LIGHT YELLOW**  
Clarity Grade **VS 2**

August 11, 2025  
IGI Report Number **LG724564318**  
Description **LABORATORY GROWN DIAMOND**  
Shape and Cutting Style **CUSHION MIXED CUT**  
Measurements **12.12 X 8.35 X 5.19 MM**

**GRADING RESULTS**

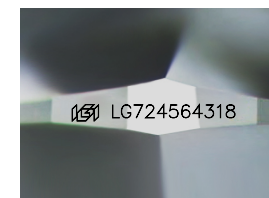
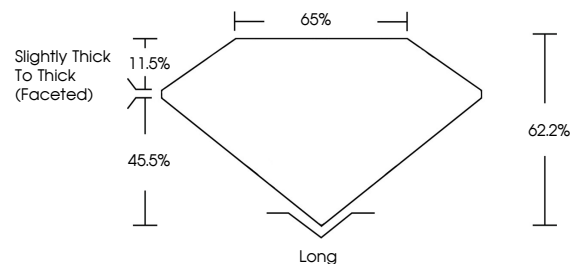
Carat Weight **5.01 CARATS**  
Color Grade **FANCY LIGHT YELLOW**  
Clarity Grade **VS 2**

**ADDITIONAL GRADING INFORMATION**

Polish **EXCELLENT**  
Symmetry **EXCELLENT**  
Fluorescence **NONE**  
Inscription(s) **IGI LG724564318**

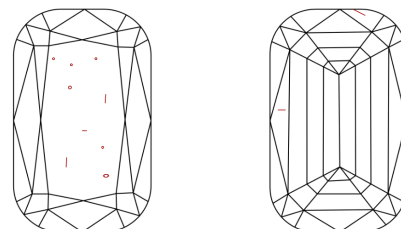
Comments: This Laboratory Grown Diamond was created by Chemical Vapor Deposition (CVD) growth process.

**PROPORTIONS**



Sample Image Used

**CLARITY CHARACTERISTICS**



**KEY TO SYMBOLS**

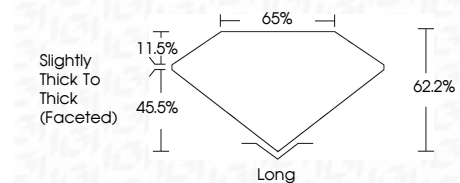
Red symbols indicate internal characteristics.  
Green symbols indicate external characteristics.

**COLOR**

D E F G H I J Faint Very Light Light

**CLARITY**

IF	VS <sup>1-2</sup>	VS <sup>1-2</sup>	SI <sup>1-2</sup>	I <sup>1-3</sup>
Internally Flawless	Very Very Slightly Included	Very Slightly Included	Slightly Included	Included



**ADDITIONAL GRADING INFORMATION**

Polish **EXCELLENT**  
Symmetry **EXCELLENT**  
Fluorescence **NONE**  
Inscription(s) **IGI LG724564318**  
Comments: This Laboratory Grown Diamond was created by Chemical Vapor Deposition (CVD) growth process.



August 11, 2025  
IGI Report No LG724564318  
**CUSHION MIXED CUT**  
5.01 CARATS  
FANCY LIGHT YELLOW  
VS 2  
12.12 X 8.35 X 5.19 MM  
Color Grade  
FANCY LIGHT YELLOW  
Clarity Grade  
VS 2  
Depth  
62.2%  
Table  
65%  
Girdle  
Slightly Thick To Thick (Faceted)  
Culet  
Long  
Polish  
EXCELLENT  
Symmetry  
EXCELLENT  
Fluorescence  
NONE  
Inscription(s)  
IGI LG724564318  
Comments: This Laboratory Grown Diamond was created by Chemical Vapor Deposition (CVD) growth process.