



ELECTRONIC COPY

LG724559321
Report verification at igi.org



November 14, 2025

IGI Report Number **LG724559321**

Description **LABORATORY GROWN DIAMOND**

Shape and Cutting Style **CUT CORNERED
RECTANGULAR MODIFIED
BRILLIANT**

Measurements **10.68 X 7.44 X 4.97 MM**

GRADING RESULTS

Carat Weight **3.51 CARATS**

Color Grade **D**

Clarity Grade **VVS 1**

LABORATORY GROWN DIAMOND REPORT

November 14, 2025

IGI Report Number **LG724559321**

Description **LABORATORY GROWN DIAMOND**

Shape and Cutting Style **CUT CORNERED RECTANGULAR
MODIFIED BRILLIANT**

Measurements **10.68 X 7.44 X 4.97 MM**

GRADING RESULTS

Carat Weight **3.51 CARATS**

Color Grade **D**

Clarity Grade **VVS 1**

ADDITIONAL GRADING INFORMATION

Polish **EXCELLENT**

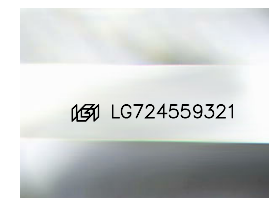
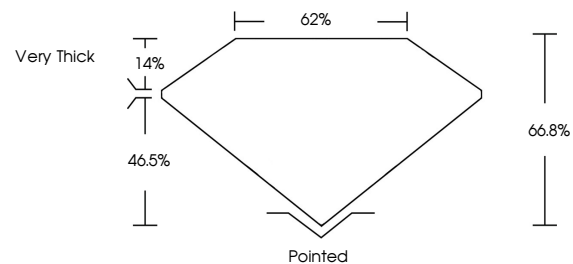
Symmetry **EXCELLENT**

Fluorescence **NONE**

Inscription(s) **IGI LG724559321**

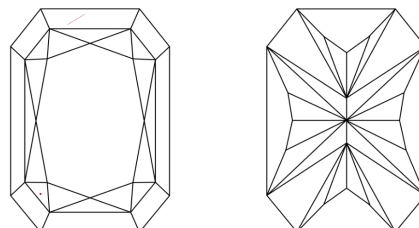
Comments: This Laboratory Grown Diamond was created by Chemical Vapor Deposition (CVD) growth process.
Type IIa

PROPORTIONS



Sample Image Used

CLARITY CHARACTERISTICS



KEY TO SYMBOLS

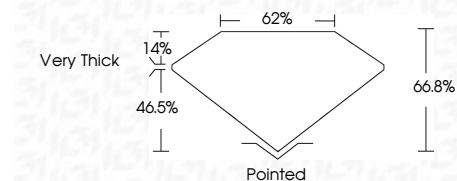
Red symbols indicate internal characteristics.
Green symbols indicate external characteristics.

COLOR

D E F G H I J Faint Very Light Light

CLARITY

FL	IF	VVS ¹⁻²	VS ¹⁻²	SI ¹⁻²	I ¹⁻³
Flawless	Internally Flawless	Very Very Slightly Included	Very Slightly Included	Slightly Included	Included



ADDITIONAL GRADING INFORMATION

Polish **EXCELLENT**

Symmetry **EXCELLENT**

Fluorescence **NONE**

Inscription(s) **IGI LG724559321**

Comments: This Laboratory Grown Diamond was created by Chemical Vapor Deposition (CVD) growth process.
Type IIa



IGI



November 14, 2025	IGI Report No LG724559321	CUT CORNERED RECT. MODIFIED BRILLIANT	10.68 X 7.44 X 4.97 MM	3.51 CARATS	D	VVS 1	66.8%	62%	Very Thick	Pointed	EXCELLENT	EXCELLENT	NONE	IGI LG724559321
IGI Report No	IGI Report No	IGI Report No	IGI Report No	IGI Report No	IGI Report No	IGI Report No	IGI Report No	IGI Report No	IGI Report No	IGI Report No	IGI Report No	IGI Report No	IGI Report No	IGI Report No

Comments: This Laboratory Grown Diamond was created by Chemical Vapor Deposition (CVD) growth process.
Type IIa