



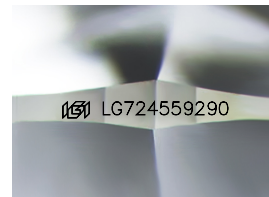
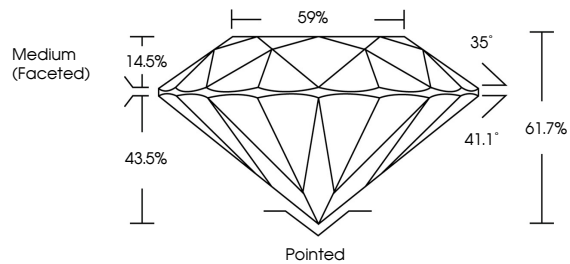
**INTERNATIONAL
GEMOLOGICAL
INSTITUTE**

ELECTRONIC COPY

LABORATORY GROWN DIAMOND REPORT

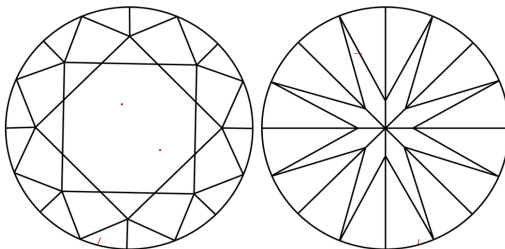
LG724559290
Report verification at igi.org

PROPORTIONS



Sample Image Used

CLARITY CHARACTERISTICS



KEY TO SYMBOLS

Red symbols indicate internal characteristics.
Green symbols indicate external characteristics.

COLOR

D E F G H I J Faint Very Light Light

CLARITY

IF WS¹⁻² VS¹⁻² SI¹⁻² |¹⁻³

Internally Flawless	Very Very Slightly Included	Very Slightly Included	Slightly Included	Included
------------------------	--------------------------------	---------------------------	----------------------	----------



© IGI 2020, International Gemological Institute

FD - 10 20

www.igi.org

LABORATORY GROWN DIAMOND REPORT



August 28, 2025

IGI Report Number **LG724559290**

Description	LABORATORY GROWN DIAMOND
-------------	--------------------------

Shape and Cutting Style **ROUND BRILLIANT**

Measurements	10.20 - 10.24 X 6.31 MM
--------------	-------------------------

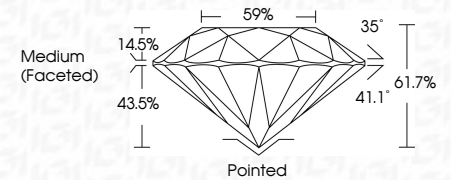
GRADING RESULTS

Carat Weight **4.04 CARATS**

Color Grade **E**

Clarity Grade VS 2

Cut Grade **IDEAL**



ADDITIONAL GRADING INFORMATION

Polish **EXCELLENT**Symmetry **EXCELLENT**Fluorescence **NONE**Inscription(s) LG724559290

Comments: This Laboratory Grown Diamond was created by Chemical Vapor Deposition (CVD) growth process.
Type IIa



IGI

August 28, 2025	10.20 - 10.24 X 6.31 MM	Color Grade	VS.2	Polished
IGI Report No. I6724659290	Carat Weight	Clarity Grade	IDEXL	EXCELLENT
ROUND BRILLIANT		Cut Grade	61.7%	EXCELLENT
		Depth	59%	NONE
		Table		1691 L6724659290
		Girdle	Medium (Feasible)	
		Culet		
		Polish		
		Symmetry		
		Fluorescence		
		Inclusions (None)		
		Comments:		
		This Laboratory Grown Diamond was created by Chemical Vapor Deposition (CVD) growth process.		
		Type IId		