



ELECTRONIC COPY

LABORATORY GROWN DIAMOND REPORT

LG724559241
Report verification at igi.org

August 27, 2025	
IGI Report Number	LG724559241
Description	LABORATORY GROWN DIAMOND
Shape and Cutting Style	ROUND BRILLIANT
Measurements	11.92 - 11.98 X 6.97 MM

GRADING RESULTS

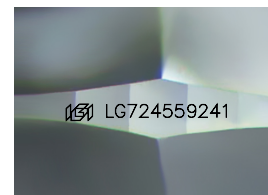
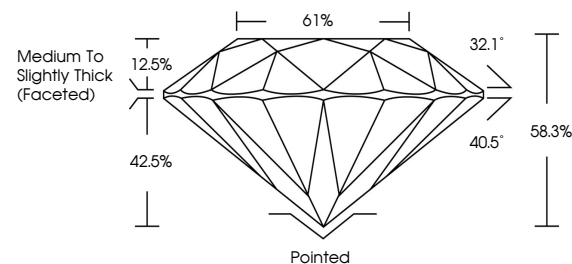
Carat Weight	6.04 CARATS
Color Grade	F
Clarity Grade	VS 1
Cut Grade	EXCELLENT

ADDITIONAL GRADING INFORMATION

Polish	EXCELLENT
Symmetry	EXCELLENT
Fluorescence	NONE
Inscription(s)	15 LG724559241

Comments: This Laboratory Grown Diamond was created by Chemical Vapor Deposition (CVD) growth process.
Type IIa

PROPORTIONS



Sample Image Used

COLOR

D E F G H I J Faint Very Light Light

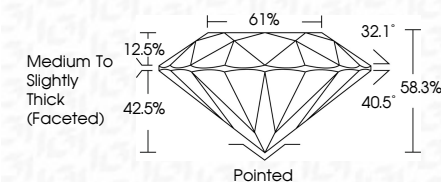
CLARITY

IF	VS ¹⁻²	VS ¹⁻²	SI ¹⁻²	I ¹⁻³
Internally Flawless	Very Very Slightly Included	Very Slightly Included	Slightly Included	Included

LABORATORY GROWN DIAMOND REPORT



August 27, 2025	
IGI Report Number	LG724559241
Description	LABORATORY GROWN DIAMOND
Shape and Cutting Style	ROUND BRILLIANT
Measurements	11.92 - 11.98 X 6.97 MM
GRADING RESULTS	
Carat Weight	6.04 CARATS
Color Grade	F
Clarity Grade	VS 1
Cut Grade	EXCELLENT



ADDITIONAL GRADING INFORMATION

Polish	EXCELLENT
Symmetry	EXCELLENT
Fluorescence	NONE
Inscription(s)	LG LG724559241
<p>Comments: This Laboratory Grown Diamond was created by Chemical Vapor Deposition (CVD) growth process.</p> <p>Type IIa</p>	



© IGI 2020, International Gemological Institute

FD - 10 20



THIS DOCUMENT WAS PRODUCED WITH THE FOLLOWING SECURITY MEASURES: SPECIAL DOCUMENT PAPER, INK SCREENS, WATERMARK, BACKGROUND DESIGNS, HOLOGRAM AND OTHER SECURITY FEATURES NOT LISTED AND DO EXCEED DOCUMENT SECURITY INDUSTRY GUIDELINES

www.igi.org

August 27, 2025
GI Report No LG7245592A1
ROUND BRILLIANT

ROUND BRILLIANT	11.92 - 11.98 X 6.97 MM	Color Grade	Carat Weight	6.04 CARATS
		Clarity Grade	Cut Grade	VS1
		Depth	Table	EXCELLENT
		Gra		58.3%
				61%
				Medium to Slightly Thick Faceted
		Clust	Polish	Pointed
		Symmetry	Fluorescence	EXCELLENT
				EXCELLENT
				NONE
				cert: 1794552001

Comments:
This Laboratory Grown Diamond was
created by Chemical Vapor Deposition
(CVD) growth process.