



ELECTRONIC COPY

LG724556411
Report verification at igi.org



July 28, 2025
IGI Report Number LG724556411
Description LABORATORY GROWN DIAMOND
Shape and Cutting Style ROUND BRILLIANT
Measurements 9.31 - 9.35 X 5.78 MM
GRADING RESULTS
Carat Weight 3.09 CARATS
Color Grade E
Clarity Grade VVS 2
Cut Grade IDEAL

July 28, 2025
IGI Report Number LG724556411
Description LABORATORY GROWN DIAMOND
Shape and Cutting Style ROUND BRILLIANT
Measurements 9.31 - 9.35 X 5.78 MM

GRADING RESULTS

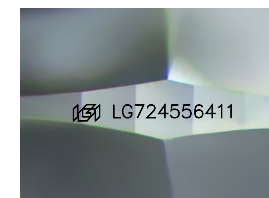
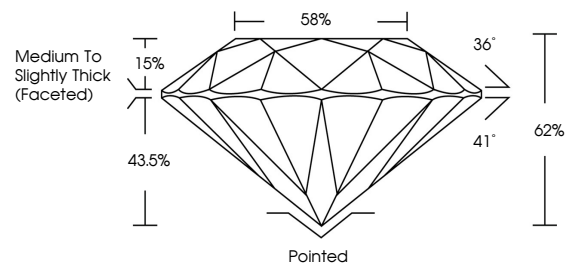
Carat Weight 3.09 CARATS
Color Grade E
Clarity Grade VVS 2
Cut Grade IDEAL

ADDITIONAL GRADING INFORMATION

Polish EXCELLENT
Symmetry EXCELLENT
Fluorescence NONE
Inscription(s) IGI LG724556411

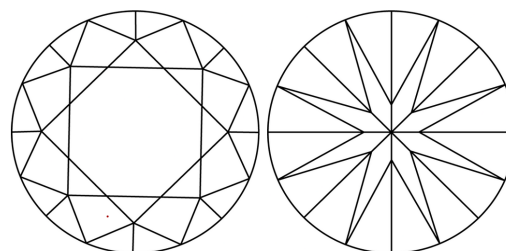
Comments: This Laboratory Grown Diamond was created by Chemical Vapor Deposition (CVD) growth process. Type IIa

PROPORTIONS



Sample Image Used

CLARITY CHARACTERISTICS



KEY TO SYMBOLS

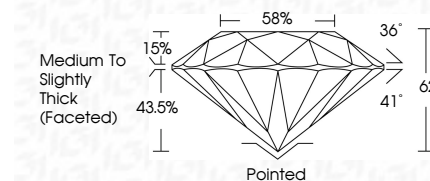
Red symbols indicate internal characteristics.
Green symbols indicate external characteristics.

COLOR

D E F G H I J Faint Very Light Light

CLARITY

IF WS 1-2 VS 1-2 SI 1-2 I 1-3
Internally Flawless Very Very Slightly Included Very Slightly Included Slightly Included Included



ADDITIONAL GRADING INFORMATION

Polish EXCELLENT
Symmetry EXCELLENT
Fluorescence NONE
Inscription(s) IGI LG724556411
Comments: This Laboratory Grown Diamond was created by Chemical Vapor Deposition (CVD) growth process. Type IIa



July 28, 2025
IGI Report No LG724556411
ROUND BRILLIANT
9.31 - 9.35 X 5.78 MM
3.09 CARATS
E
VVS 2
IDEAL
62%
58%
Medium To Slightly Thick (Faceted)
Pointed
EXCELLENT
EXCELLENT
NONE
IGI LG724556411
Comments: This Laboratory Grown Diamond was created by Chemical Vapor Deposition (CVD) growth process. Type IIa