



INTERNATIONAL GEMOLOGICAL INSTITUTE

ELECTRONIC COPY

LABORATORY GROWN DIAMOND REPORT

July 28, 2025
IGI Report Number **LG724555838**
Description **LABORATORY GROWN DIAMOND**
Shape and Cutting Style **PRINCESS CUT**
Measurements **3.98 X 3.81 X 2.75 MM**

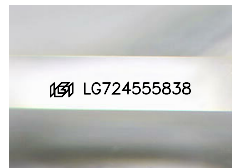
GRADING RESULTS

Carat Weight **0.36 CARAT**
Color Grade **E**
Clarity Grade **VVS 1**

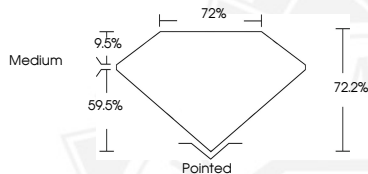
ADDITIONAL GRADING INFORMATION

Polish **VERY GOOD**
Symmetry **VERY GOOD**
Fluorescence **NONE**
Inscription(s) **IGI LG724555838**

Comments: This Laboratory Grown Diamond was created by
Chemical Vapor Deposition (CVD) growth process.
Type Ila



Sample Image Used



THIS DOCUMENT WAS PRODUCED WITH THE FOLLOWING SECURITY MEASURES: SPECIAL DOCUMENT PAPER, INK SCREENS, WATERMARK, BACKGROUND DESIGNS, HOLOGRAM AND OTHER SECURITY FEATURES NOT LISTED AND DO EXCEED DOCUMENT SECURITY INDUSTRY GUIDELINES.

For terms & conditions and to verify this report, please visit www.igi.org



July 28, 2025
IGI Report Number **LG724555838**
PRINCESS CUT
LABORATORY GROWN DIAMOND
3.98 X 3.81 X 2.75 MM
Carat Weight **0.36 CARAT**
Color Grade **E**
Clarity Grade **VVS 1**
Polish **VERY GOOD**
Symmetry **VERY GOOD**
Fluorescence **NONE**
Inscription(s) **IGI LG724555838**
Comments: This Laboratory Grown
Diamond was created by
Chemical Vapor Deposition (CVD)
growth process. Type Ila



July 28, 2025
IGI Report Number **LG724555838**
PRINCESS CUT
LABORATORY GROWN DIAMOND
3.98 X 3.81 X 2.75 MM
Carat Weight **0.36 CARAT**
Color Grade **E**
Clarity Grade **VVS 1**
Polish **VERY GOOD**
Symmetry **VERY GOOD**
Fluorescence **NONE**
Inscription(s) **IGI LG724555838**
Comments: This Laboratory Grown
Diamond was created by
Chemical Vapor Deposition (CVD)
growth process. Type Ila