



ELECTRONIC COPY

LG724551845
Report verification at igi.org



August 27, 2025

IGI Report Number **LG724551845**

Description **LABORATORY GROWN DIAMOND**

Shape and Cutting Style **PRINCESS CUT**

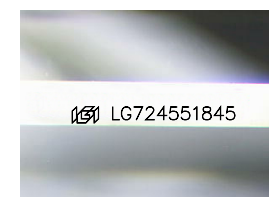
Measurements **7.61 X 7.59 X 5.30 MM**

GRADING RESULTS

Carat Weight **2.79 CARATS**

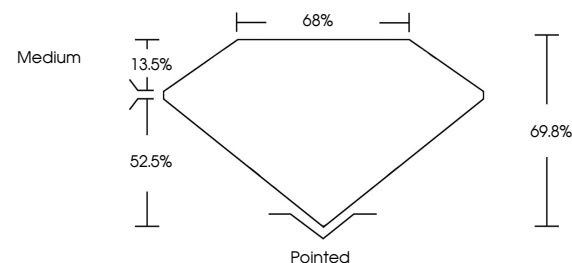
Color Grade **D**

Clarity Grade **VVS 2**

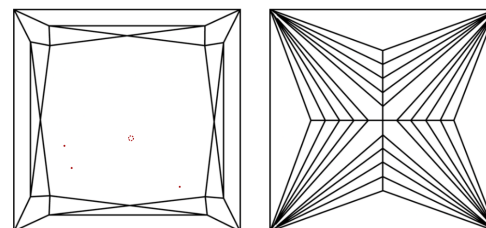


Sample Image Used

PROPORTIONS



CLARITY CHARACTERISTICS



KEY TO SYMBOLS

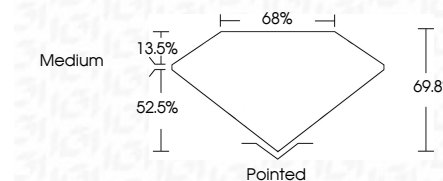
Red symbols indicate internal characteristics.
Green symbols indicate external characteristics.

COLOR

D E F G H I J Faint Very Light Light

CLARITY

IF	VS ¹⁻²	VVS ¹⁻²	S ¹⁻²	I ¹⁻³
Internally Flawless	Very Very Slightly Included	Very Slightly Included	Slightly Included	Included



ADDITIONAL GRADING INFORMATION

Polish **EXCELLENT**

Symmetry **EXCELLENT**

Fluorescence **NONE**

Inscription(s) **IGI LG724551845**

Comments: This Laboratory Grown Diamond was created by Chemical Vapor Deposition (CVD) growth process.
Type IIa



IGI



August 27, 2025
IGI Report No LG724551845
PRINCESS CUT

2.79 CARATS
D

7.61 X 7.59 X 5.30 MM
VVS 2
68%
52.5%

Medium
Pointed
EXCELLENT
EXCELLENT
NONE
IGI LG724551845

Comments: This Laboratory Grown Diamond was created by Chemical Vapor Deposition (CVD) growth process.
Type IIa