

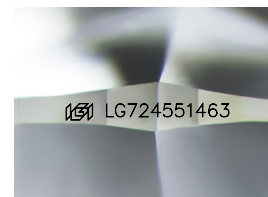
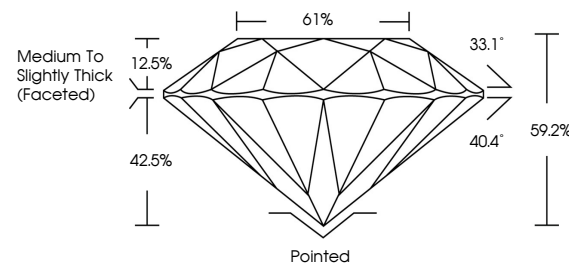


ELECTRONIC COPY

LABORATORY GROWN DIAMOND REPORT

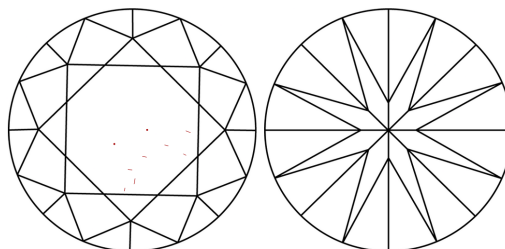
LG724551463
Report verification at igi.org

PROPORTIONS



Sample Image Used

CLARITY CHARACTERISTICS



KEY TO SYMBOLS

Red symbols indicate internal characteristics.
Green symbols indicate external characteristics.

COLOR

D E F G H I J Faint Very Light Light

CLARITY

IF WS¹⁻² VS¹⁻² SI¹⁻² |¹⁻³

Internally Flawless	Very Very Slightly Included	Very Slightly Included	Slightly Included	Included
------------------------	--------------------------------	---------------------------	----------------------	----------



August 25, 2025

IGI Report Number **LG724551463**

Description	LABORATORY GROWN DIAMOND
-------------	--------------------------

Shape and Cutting Style **ROUND BRILLIANT**

Measurements 10.67 - 10.71 X 6.33 MM

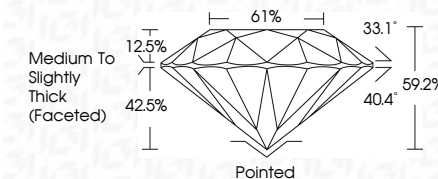
GRADING RESULTS

Carat Weight **4.50 CARATS**

Color Grade **E**

Clarity Grade VS 1

Cut Grade **IDEAL**



ADDITIONAL GRADING INFORMATION

Polish **EXCELLENT**Symmetry **EXCELLENT**Fluorescence NONInscription(s)  LG724551463

Comments: This Laboratory Grown Diamond was created by Chemical Vapor Deposition (CVD) growth process.
Type IIa



© IGI 2020, International Gemological Institute

FD - 10 20

www.igi.org



THIS DOCUMENT WAS PRODUCED WITH THE FOLLOWING SECURITY MEASURES: SPECIAL DOCUMENT PAPER, INK SCREENS, WATERMARK, BACKGROUND DESIGNS, HOLOGRAM AND OTHER SECURITY FEATURES NOT LISTED AND DO EXCEED DOCUMENT SECURITY INDUSTRY GUIDELINE

August 26, 2026	4.50 CARATS
G Report No LG74551463	E VS 1 IDEAL 59.2% 61%
ROUND BRILLIANT	Medium to Slightly Thick Faceted-D
10.07 - 10.71 X 6.33 MM	Paired Excellent
Carat Weight	Polish EXCELLENT
Color Grade	Symmetry NONE
Cut Grade	Fluorescence #69 LG74551463
Depth	Inscriptions(s)
Table	Comments:
Girdle	The Laboratory Grown Diamond was grown by the Chemical Vapor Deposition (CVD) growth process.
	Type IIG