



ELECTRONIC COPY

LG724550935
Report verification at igi.org



August 22, 2025
IGI Report Number **LG724550935**
Description **LABORATORY GROWN DIAMOND**
Shape and Cutting Style **PRINCESS CUT**
Measurements **7.98 X 7.98 X 5.74 MM**
GRADING RESULTS
Carat Weight **3.24 CARATS**
Color Grade **E**
Clarity Grade **VVS 2**

August 22, 2025
IGI Report Number **LG724550935**
Description **LABORATORY GROWN DIAMOND**
Shape and Cutting Style **PRINCESS CUT**
Measurements **7.98 X 7.98 X 5.74 MM**

GRADING RESULTS

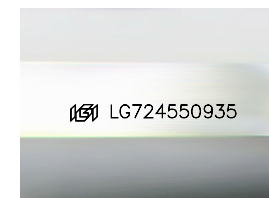
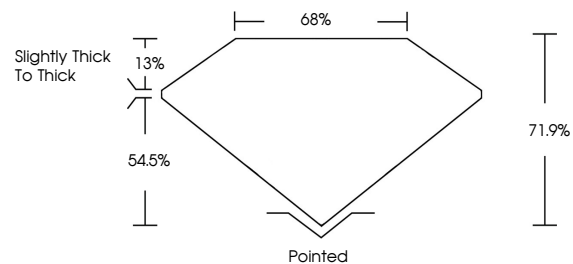
Carat Weight **3.24 CARATS**
Color Grade **E**
Clarity Grade **VVS 2**

ADDITIONAL GRADING INFORMATION

Polish **EXCELLENT**
Symmetry **VERY GOOD**
Fluorescence **NONE**
Inscription(s) **IGI LG724550935**

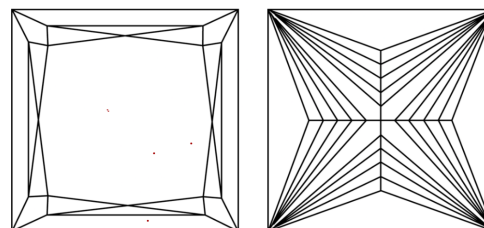
Comments: This Laboratory Grown Diamond was created by Chemical Vapor Deposition (CVD) growth process. Type IIa

PROPORTIONS



Sample Image Used

CLARITY CHARACTERISTICS



KEY TO SYMBOLS

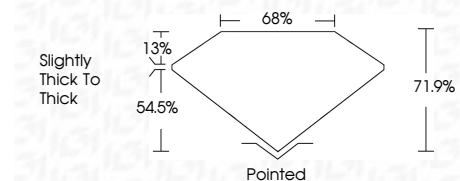
Red symbols indicate internal characteristics.
Green symbols indicate external characteristics.

COLOR

D E F G H I J Faint Very Light Light

CLARITY

IF	VS ¹⁻²	VS ¹⁻²	SI ¹⁻²	I ¹⁻³
Internally Flawless	Very Very Slightly Included	Very Slightly Included	Slightly Included	Included



ADDITIONAL GRADING INFORMATION

Polish **EXCELLENT**
Symmetry **VERY GOOD**
Fluorescence **NONE**
Inscription(s) **IGI LG724550935**
Comments: This Laboratory Grown Diamond was created by Chemical Vapor Deposition (CVD) growth process. Type IIa



August 22, 2025
IGI Report No LG724550935
PRINCESS CUT
7.98 X 7.98 X 5.74 MM
3.24 CARATS
E
VS 2
71.9%
68%
Slightly Thick To Thick
Pointed
EXCELLENT
VERY GOOD
NONE
IGI LG724550935
Comments: This Laboratory Grown Diamond was created by Chemical Vapor Deposition (CVD) growth process. Type IIa