



**ELECTRONIC COPY**

## LABORATORY GROWN DIAMOND REPORT

LG724548937  
Report verification at [igi.org](https://igi.org)

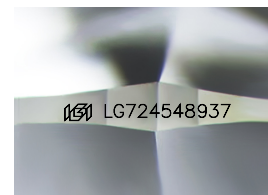
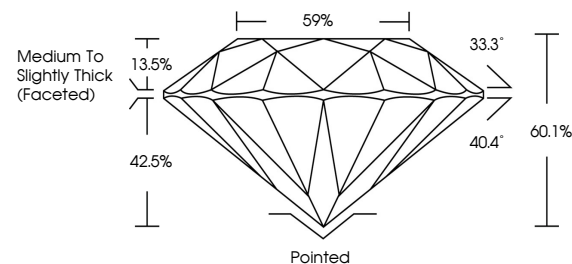
July 24, 2025	
IGI Report Number	LG724548937
Description	LABORATORY GROWN DIAMOND
Shape and Cutting Style	ROUND BRILLIANT
Measurements	6.53 - 6.56 X 3.93 MM
GRADING RESULTS	
Carat Weight	1.04 CARAT
Color Grade	D
Clarity Grade	VVS 2
Cut Grade	IDEAL

### ADDITIONAL GRADING INFORMATION

Polish	EXCELLENT
Symmetry	EXCELLENT
Fluorescence	NONE
Inscription(s)	15 LG724548937

Comments: As Grown - No indication of post-growth treatment.  
This Laboratory Grown Diamond was created by High Pressure High Temperature (HPHT) growth process.  
Type II

## PROPORTIONS



Sample Image Used

## COLOR

D E F G H I J Faint Very Light Light

## CLARITY

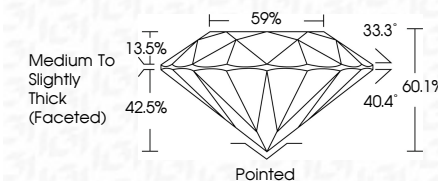
IF WS<sup>1-2</sup> VS<sup>1-2</sup> SI<sup>1-2</sup> |<sup>1-3</sup>

Internally Flawless	Very Very Slightly Included	Very Slightly Included	Slightly Included	Included
------------------------	--------------------------------	---------------------------	----------------------	----------


## LABORATORY GROWN DIAMOND REPORT



July 24, 2025	
IGI Report Number	LG724548937
Description	LABORATORY GROWN DIAMOND
Shape and Cutting Style	ROUND BRILLIANT
Measurements	6.53 - 6.56 X 3.93 MM
GRADING RESULTS	
Carat Weight	1.04 CARAT
Color Grade	D
Clarity Grade	VVS 2
Cut Grade	IDEAL



### ADDITIONAL GRADING INFORMATION

Polish	EXCELLENT
Symmetry	EXCELLENT
Fluorescence	NONE
Inscription(s)	 LG724548937
Comments: As Grown - No indication of post-growth treatment.	
This Laboratory Grown Diamond was created by High Pressure High Temperature (HPHT) growth process.	
Type II	



© IGI 2020, International Gemological Institute

FD - 10 20



THIS DOCUMENT WAS PRODUCED WITH THE FOLLOWING SECURITY MEASURES: SPECIAL DOCUMENT PAPER, INK SCREENS, WATERMARK, BACKGROUND DESIGNS, HOLOGRAM AND OTHER SECURITY FEATURES NOT LISTED AND DO EXCEED DOCUMENT SECURITY INDUSTRY GUIDELINES

**www.igi.org**

July 24, 2025  
GJ Report No 1G724548937

GI Report No LG75  
POC IND BRILLIANT

6.53 - 6.56 X 3.93 MM

Carat Weight  
1.04 CARAT

	Color Grade	D
100%		
90%		
80%		
70%		
60%		
50%		
40%		
30%		
20%		
10%		
0%		

Clarity Grade	VS2	IDEAL
Cut Grade		

Depth	60.1%	50%
Top 10	100%	100%
Top 20	100%	100%
Top 30	100%	100%
Top 40	100%	100%
Top 50	100%	100%
Top 60	100%	100%
Top 70	100%	100%
Top 80	100%	100%
Top 90	100%	100%
Top 100	100%	100%

table		59%
Girdle	Medium To Slightly	

Thick (Faceted)

Culet	Pointed
Polish	EXCELLENT

Symmetry

Fluorescence	None
Inscription(s)	151 LG724548937

Comments:

**As Grown - No Indication of post-growth treatment.**

**This Laboratory Grown Diamond was  
Created by High Pressure High**

Temperature (HPHT) growth process.  
Type II