



ELECTRONIC COPY

LG724545329 Report verification at igi.org



July 25, 2025 IGI Report Number LG724545329 Description LABORATORY GROWN DIAMOND Shape and Cutting Style CUT CORNERED RECTANGULAR MODIFIED BRILLIANT Measurements 7.46 X 5.07 X 3.36 MM GRADING RESULTS Carat Weight 1.10 CARAT Color Grade D Clarity Grade VS 1

LABORATORY GROWN DIAMOND REPORT

July 25, 2025 IGI Report Number LG724545329 Description LABORATORY GROWN DIAMOND Shape and Cutting Style CUT CORNERED RECTANGULAR MODIFIED BRILLIANT Measurements 7.46 X 5.07 X 3.36 MM

GRADING RESULTS

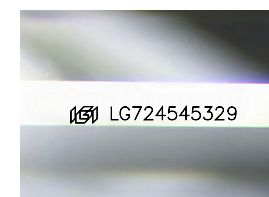
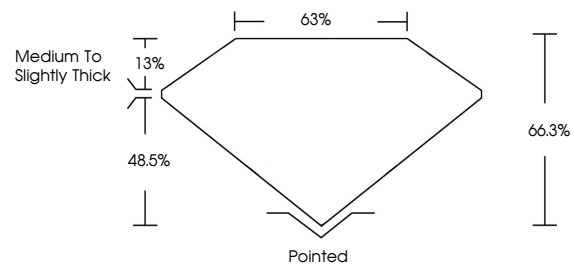
Carat Weight 1.10 CARAT Color Grade D Clarity Grade VS 1

ADDITIONAL GRADING INFORMATION

Polish EXCELLENT Symmetry EXCELLENT Fluorescence NONE Inscription(s) LG724545329

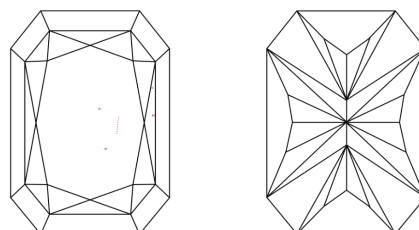
Comments: This Laboratory Grown Diamond was created by Chemical Vapor Deposition (CVD) growth process. Type IIa

PROPORTIONS



Sample Image Used

CLARITY CHARACTERISTICS



KEY TO SYMBOLS

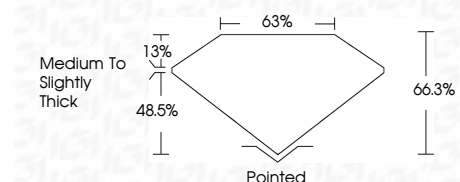
Red symbols indicate internal characteristics. Green symbols indicate external characteristics.

COLOR

D E F G H I J Faint Very Light Light

CLARITY

IF WS 1-2 VS 1-2 SI 1-2 I 1-3 Internally Flawless Very Very Slightly Included Very Slightly Included Slightly Included Included



ADDITIONAL GRADING INFORMATION

Polish EXCELLENT Symmetry EXCELLENT Fluorescence NONE Inscription(s) LG724545329 Comments: This Laboratory Grown Diamond was created by Chemical Vapor Deposition (CVD) growth process. Type IIa



July 25, 2025 IGI Report No LG724545329 CUT CORNERED RECT. MODIFIED BRILLIANT 1.10 CARAT D 66.3% 63% Medium to Slightly Thick Pointed EXCELLENT EXCELLENT NONE NONE LG724545329 Comments: This Laboratory Grown Diamond was created by Chemical Vapor Deposition (CVD) growth process. Type IIa