

**ELECTRONIC COPY**

## LABORATORY GROWN DIAMOND REPORT

August 4, 2025	
IGI Report Number	LG724544431
Description	LABORATORY GROWN DIAMOND
Shape and Cutting Style	PRINCESS CUT
Measurements	5.42 X 5.40 X 3.56 MM

## GRADING RESULTS

Carat Weight	1.03 CARAT
Color Grade	FANCY VIVID YELLOW
Clarity Grade	INTERNALLY FLAWLESS

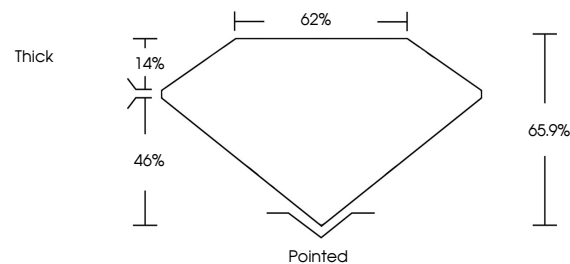
### ADDITIONAL GRADING INFORMATION

Polish	EXCELLENT
Symmetry	EXCELLENT
Fluorescence	NONE
Inscription(s)	 LG724544431

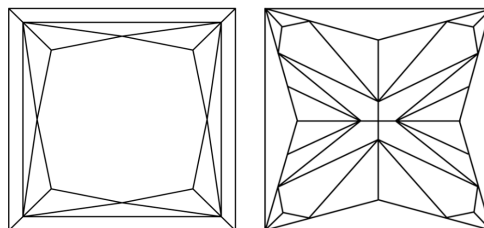
Comments: As Grown - No indication of post-growth treatment.  
This Laboratory Grown Diamond was created by High Pressure High Temperature (HPHT) growth process.

LG724544431  
Report verification at [igi.org](https://igi.org)

## PROPORTIONS

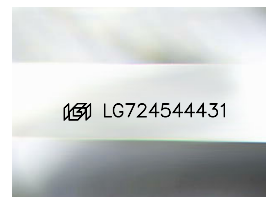


## CLARITY CHARACTERISTICS



## KEY TO SYMBOLS

Red symbols indicate internal characteristics.  
Green symbols indicate external characteristics.



Sample Image Used

**COLOR**

D E F G H I J Faint Very Light Light

## CLARITY

IF	VVS <sup>1-2</sup>	VS <sup>1-2</sup>	SI <sup>1-2</sup>	I <sup>1-3</sup>
Internally Flawless	Very Very Slightly Included	Very Slightly Included	Slightly Included	Included

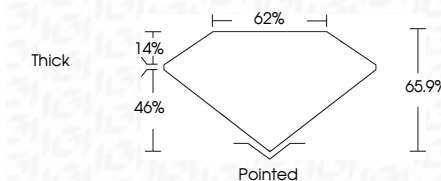
## LABORATORY GROWN DIAMOND REPORT



August 4, 2025	
IGI Report Number	LG724544431
Description	LABORATORY GROWN DIAMOND
Shape and Cutting Style	PRINCESS CUT
Measurements	5.42 X 5.40 X 3.56 MM
GRADING RESULTS	
Carat Weight	1.03 CARAT
Color Grade	FANCY VIVID YELLOW
Clarity Grade	INTERNALLY FLAWLESS

### ADDITIONAL GRADING INFORMATION

Polish	EXCELLENT
Symmetry	EXCELLENT
Fluorescence	NONE
Inscription(s)	<del>(LG)</del> LG724544431
<p>Comments: As Grown - No indication of post-growth treatment.</p> <p>This Laboratory Grown Diamond was created by High Pressure High Temperature (HPHT) growth process.</p>	



IG



August 4, 2025  
GI Report No LG724544431  
PRINCESS CIT

1.08 CARAT	
FANCY VIVID YELLOW	
Clarity Grade	IF
Depth	66.9%
Table	62%
Girdle	Thick
Culet	Pointed
Polish	EXCELLENT
Symmetry	EXCELLENT
Fluorescence	NONE
Report #	15701544931

**Comments:**  
As Grown - No indication of post-growth treatment.  
This Laboratory Grown Diamond was created by High Pressure High Temperature (HPHT) growth process.