



**ELECTRONIC COPY**

LG724540799  
Report verification at igi.org

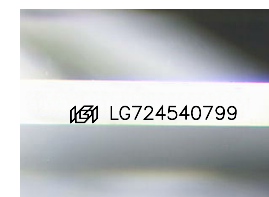


August 20, 2025  
IGI Report Number **LG724540799**  
Description **LABORATORY GROWN DIAMOND**  
Shape and Cutting Style **CUT CORNERED  
RECTANGULAR MODIFIED  
BRILLIANT**

Measurements **8.52 X 5.78 X 3.61 MM**

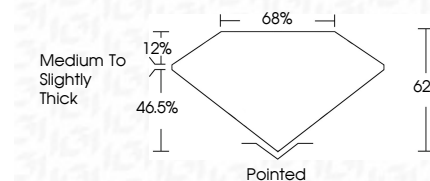
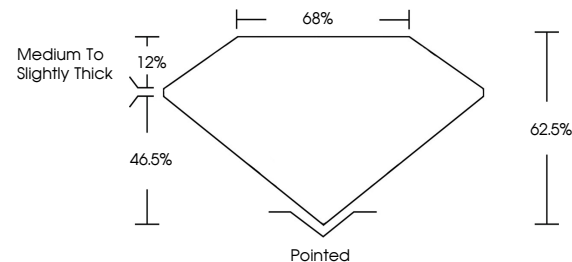
**GRADING RESULTS**

Carat Weight **1.63 CARAT**  
Color Grade **E**  
Clarity Grade **VVS 2**



Sample Image Used

**PROPORTIONS**



**ADDITIONAL GRADING INFORMATION**

Polish **VERY GOOD**  
Symmetry **EXCELLENT**  
Fluorescence **NONE**  
Inscription(s) **(IGI) LG724540799**  
Comments: This Laboratory Grown Diamond was created by Chemical Vapor Deposition (CVD) growth process. Type IIa



**IGI**



© IGI 2020, International Gemological Institute FD - 10 20

THIS DOCUMENT WAS PRODUCED WITH THE FOLLOWING SECURITY MEASURES: SPECIAL DOCUMENT PAPER, INK SCREENS, WATERMARK BACKGROUND DESIGNS, HOLOGRAM AND OTHER SECURITY FEATURES NOT LISTED AND DO EXCEED DOCUMENT SECURITY INDUSTRY GUIDELINES.

August 20, 2025  
IGI Report No LG724540799  
CUT CORNERED RECT. MODIFIED BRILLIANT  
8.52 X 5.78 X 3.61 MM  
Carat Weight 1.63 CARAT  
Color Grade E  
Clarity Grade VVS 2  
Table 62.05%  
Girdle 65%  
Medium to Slightly Thick  
Culet Pointed  
Polish VERY GOOD  
Symmetry EXCELLENT  
Fluorescence NONE  
Inscription(s) (IGI) LG724540799  
Comments: This Laboratory Grown Diamond was created by Chemical Vapor Deposition (CVD) growth process. Type IIa

August 20, 2025  
IGI Report Number **LG724540799**  
Description **LABORATORY GROWN DIAMOND**  
Shape and Cutting Style **CUT CORNERED RECTANGULAR  
MODIFIED BRILLIANT**  
Measurements **8.52 X 5.78 X 3.61 MM**  
**GRADING RESULTS**  
Carat Weight **1.63 CARAT**  
Color Grade **E**  
Clarity Grade **VVS 2**

**ADDITIONAL GRADING INFORMATION**  
Polish **VERY GOOD**  
Symmetry **EXCELLENT**  
Fluorescence **NONE**  
Inscription(s) **(IGI) LG724540799**

Comments: This Laboratory Grown Diamond was created by Chemical Vapor Deposition (CVD) growth process. Type IIa