



**ELECTRONIC COPY**

## LABORATORY GROWN DIAMOND REPORT

August 21, 2025	
IGI Report Number	LG724535181
Description	LABORATORY GROWN DIAMOND
Shape and Cutting Style	ROUND BRILLIANT
Measurements	9.96 - 9.98 X 6.17 MM

## GRADING RESULTS

Carat Weight	3.78 CARATS
Color Grade	D
Clarity Grade	VVS 1
Cut Grade	IDEAL

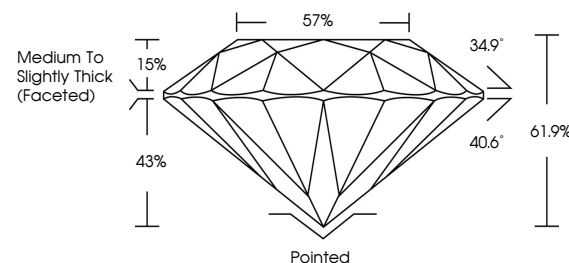
### ADDITIONAL GRADING INFORMATION

Polish	EXCELLENT
Symmetry	EXCELLENT
Fluorescence	NONE
Inscription(s)	 LG724535181

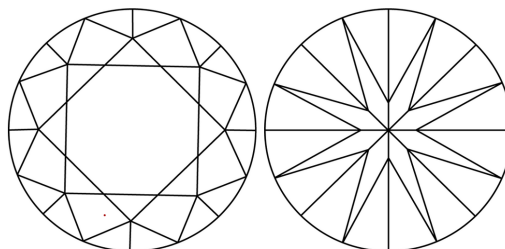
Comments: HEARTS & ARROWS  
This Laboratory Grown Diamond was created by  
Chemical Vapor Deposition (CVD) growth process.  
Type IIa

LG724535181  
Report verification at [igi.org](https://igi.org)

## PROPORTIONS

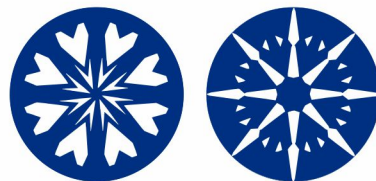


## CLARITY CHARACTERISTICS

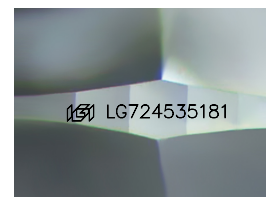


## KEY TO SYMBOLS

Red symbols indicate internal characteristics.  
Green symbols indicate external characteristics.



**www.igi.org**



Sample Image Used

## COLOR

D E F G H I J Faint Very Light Light

## CLARITY

IF      WS<sup>1-2</sup>      VS<sup>1-2</sup>      SI<sup>1-2</sup>      I<sup>1-3</sup>

Internally Flawless	Very Very Slightly Included	Very Slightly Included	Slightly Included	Included
------------------------	--------------------------------	---------------------------	----------------------	----------



© IGI 2020, International Gemological Institute

FD - 10 20

THIS DOCUMENT WAS PRODUCED WITH THE FOLLOWING SECURITY MEASURES: SPECIAL DOCUMENT PAPER, INK SCREENS, WATERMARK BACKGROUND DESIGNS, HOLOGRAM AND OTHER SECURITY FEATURES NOT LISTED AND DO EXCEED DOCUMENT SECURITY INDUSTRY GUIDELINES

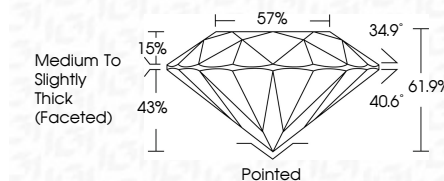
## LABORATORY GROWN DIAMOND REPORT



August 21, 2025	
IGI Report Number	LG72453518
Description	LABORATORY GROWN DIAMOND
Shape and Cutting Style	ROUND BRILLIANT
Measurements	9.96 - 9.98 X 6.17 MM

## GRADING RESULTS

Carat Weight	3.78 CARATS
Color Grade	D
Clarity Grade	VVS 1
Cut Grade	IDEAL



### ADDITIONAL GRADING INFORMATION

Polish	EXCELLENT
Symmetry	EXCELLENT
Fluorescence	NONE
Inscription(s)	<del>LG</del> LG72453518
<p>Comments: HEARTS &amp; ARROWS</p> <p>This Laboratory Grown Diamond was created by Chemical Vapor Deposition (CVD) growth process.</p> <p>Type IIa</p>	



August 21, 2025	3.78 CARATS
GI Report No. LG274635181	
ROUND BRILLIANT	
9.95 x 9.95 x 6.17 MM	
Curat Weight	D
Color Grade	VVS 1
Clarity Grade	IDEAL
Carat Weight	61.9%
Cut Grade	57%
Polish	Medium to Slightly Thick Faceted
Symmetry	Polished
Fluorescence	EXCELLENT
Inscriptions(s)	EXCELLENT
	NONE
	661 LG274635181
Comments:	
HEARST & ARROWS This Laboratory Grown Diamond was created by Chemical Vapor Deposition (CVD) growth process.	