



**ELECTRONIC COPY**

LG724529830  
Report verification at [igi.org](http://igi.org)



July 26, 2025

IGI Report Number **LG724529830**

Description **LABORATORY GROWN DIAMOND**

Shape and Cutting Style **ROUND BRILLIANT**

Measurements **10.23 - 10.29 X 6.23 MM**

**GRADING RESULTS**

Carat Weight **4.07 CARATS**

Color Grade **G**

Clarity Grade **VVS 2**

Cut Grade **IDEAL**

July 26, 2025  
IGI Report Number **LG724529830**  
Description **LABORATORY GROWN DIAMOND**  
Shape and Cutting Style **ROUND BRILLIANT**  
Measurements **10.23 - 10.29 X 6.23 MM**

**GRADING RESULTS**

Carat Weight **4.07 CARATS**

Color Grade **G**

Clarity Grade **VVS 2**

Cut Grade **IDEAL**

**ADDITIONAL GRADING INFORMATION**

Polish **EXCELLENT**

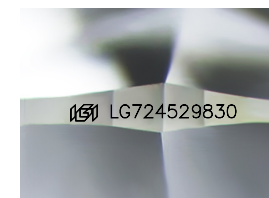
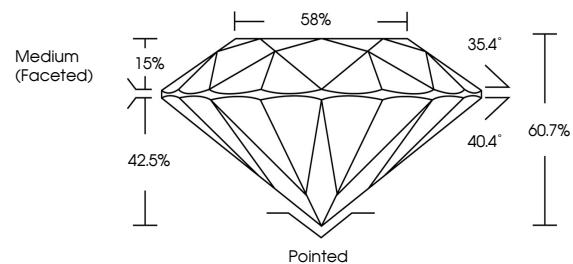
Symmetry **EXCELLENT**

Fluorescence **NONE**

Inscription(s)  **LG724529830**

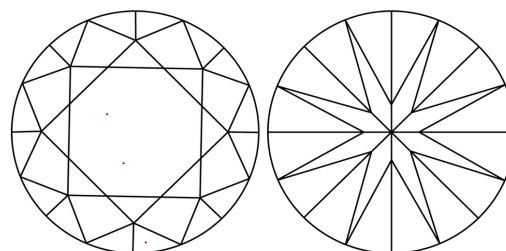
Comments: This Laboratory Grown Diamond was created by Chemical Vapor Deposition (CVD) growth process.  
Type IIa

**PROPORTIONS**



Sample Image Used

**CLARITY CHARACTERISTICS**



**KEY TO SYMBOLS**

Red symbols indicate internal characteristics.  
Green symbols indicate external characteristics.

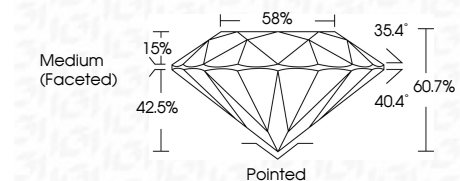
**COLOR**

D E F G H I J Faint Very Light Light

**CLARITY**

IF WS<sup>1-2</sup> VS<sup>1-2</sup> SI<sup>1-2</sup> I<sup>1-3</sup>

Internally Flawless Very Very Slightly Included Very Slightly Included Slightly Included Included



**ADDITIONAL GRADING INFORMATION**

Polish **EXCELLENT**

Symmetry **EXCELLENT**

Fluorescence **NONE**

Inscription(s)  **LG724529830**

Comments: This Laboratory Grown Diamond was created by Chemical Vapor Deposition (CVD) growth process.  
Type IIa



**IGI**



July 26, 2025	IGI Report No LG724529830	ROUND BRILLIANT	10.23 - 10.29 X 6.23 MM	4.07 CARATS	G	VVS 2	IDEAL	60.7%	58%	Medium (Faceted)	Pointed	EXCELLENT	EXCELLENT	NONE	LG724529830
<p>Comments: This Laboratory Grown Diamond was created by Chemical Vapor Deposition (CVD) growth process. Type IIa</p>															