



**ELECTRONIC COPY**

LG724529139  
Report verification at igi.org



August 1, 2025

IGI Report Number **LG724529139**

Description **LABORATORY GROWN DIAMOND**

Shape and Cutting Style **HALF MOON BRILLIANT**

Measurements **8.27 X 5.43 X 3.37 MM**

**GRADING RESULTS**

Carat Weight **1.07 CARAT**

Color Grade **FANCY INTENSE PINK**

Clarity Grade **VS 1**

August 1, 2025  
IGI Report Number **LG724529139**  
Description **LABORATORY GROWN DIAMOND**  
Shape and Cutting Style **HALF MOON BRILLIANT**  
Measurements **8.27 X 5.43 X 3.37 MM**

**GRADING RESULTS**

Carat Weight **1.07 CARAT**

Color Grade **FANCY INTENSE PINK**

Clarity Grade **VS 1**

**ADDITIONAL GRADING INFORMATION**

Polish **VERY GOOD**

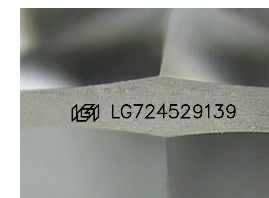
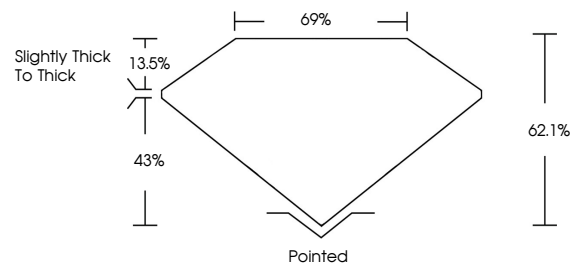
Symmetry **VERY GOOD**

Fluorescence **STRONG**

Inscription(s) **IGI LG724529139**

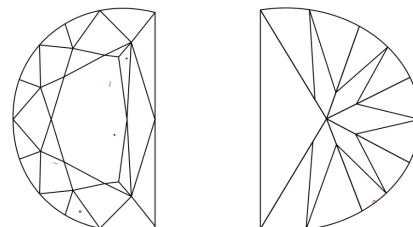
Comments: This Laboratory Grown Diamond was created by Chemical Vapor Deposition (CVD) growth process. Indications of post-growth treatment.

**PROPORTIONS**



Sample Image Used

**CLARITY CHARACTERISTICS**



**KEY TO SYMBOLS**

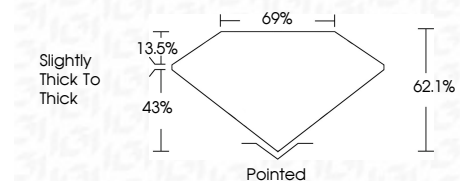
Red symbols indicate internal characteristics.  
Green symbols indicate external characteristics.

**COLOR**

D E F G H I J Faint Very Light Light

**CLARITY**

IF	VS <sup>1-2</sup>	VS <sup>1-2</sup>	SI <sup>1-2</sup>	I <sup>1-3</sup>
Internally Flawless	Very Very Slightly Included	Very Slightly Included	Slightly Included	Included



**ADDITIONAL GRADING INFORMATION**

Polish **VERY GOOD**

Symmetry **VERY GOOD**

Fluorescence **STRONG**

Inscription(s) **IGI LG724529139**

Comments: This Laboratory Grown Diamond was created by Chemical Vapor Deposition (CVD) growth process. Indications of post-growth treatment.



August 1, 2025  
IGI Report No **LG724529139**  
**HALF MOON BRILLIANT**  
Carat Weight **1.07 CARAT**  
Color Grade **FANCY INTENSE PINK**  
Clarity Grade **VS 1**  
Depth **62.1%**  
Table **69%**  
Girdle **Slightly thick to thick**  
Culet **Pointed**  
Polish **VERY GOOD**  
Symmetry **VERY GOOD**  
Fluorescence **STRONG**  
Inscription(s) **IGI LG724529139**  
Comments: This Laboratory Grown Diamond was created by Chemical Vapor Deposition (CVD) growth process. Indications of post-growth treatment.