



ELECTRONIC COPY

LG724522084
Report verification at igi.org



August 4, 2025
IGI Report Number **LG724522084**
Description **LABORATORY GROWN DIAMOND**
Shape and Cutting Style **CUSHION MODIFIED BRILLIANT**
Measurements **10.09 X 8.52 X 5.32 MM**
GRADING RESULTS
Carat Weight **3.52 CARATS**
Color Grade **FANCY INTENSE PINK**
Clarity Grade **VVS 2**

LABORATORY GROWN DIAMOND REPORT

August 4, 2025
IGI Report Number **LG724522084**
Description **LABORATORY GROWN DIAMOND**
Shape and Cutting Style **CUSHION MODIFIED BRILLIANT**
Measurements **10.09 X 8.52 X 5.32 MM**

GRADING RESULTS

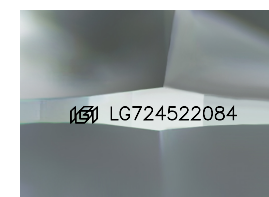
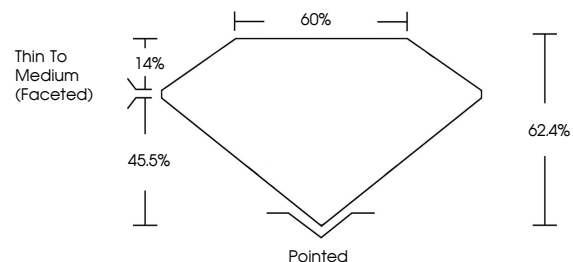
Carat Weight **3.52 CARATS**
Color Grade **FANCY INTENSE PINK**
Clarity Grade **VVS 2**

ADDITIONAL GRADING INFORMATION

Polish **EXCELLENT**
Symmetry **EXCELLENT**
Fluorescence **STRONG**
Inscription(s) **IGI LG724522084**

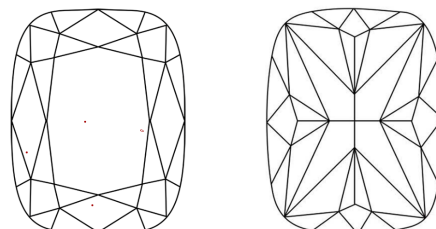
Comments: This Laboratory Grown Diamond was created by Chemical Vapor Deposition (CVD) growth process.
Indications of post-growth treatment.

PROPORTIONS



Sample Image Used

CLARITY CHARACTERISTICS



KEY TO SYMBOLS

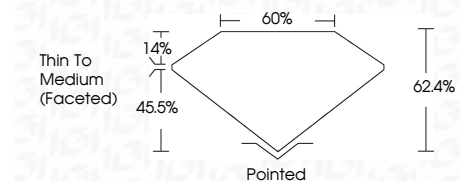
Red symbols indicate internal characteristics.
Green symbols indicate external characteristics.

COLOR

D E F G H I J Faint Very Light Light

CLARITY

IF	VS ¹⁻²	VS ¹⁻²	SI ¹⁻²	I ¹⁻³
Internally Flawless	Very Very Slightly Included	Very Slightly Included	Slightly Included	Included



ADDITIONAL GRADING INFORMATION

Polish **EXCELLENT**
Symmetry **EXCELLENT**
Fluorescence **STRONG**
Inscription(s) **IGI LG724522084**
Comments: This Laboratory Grown Diamond was created by Chemical Vapor Deposition (CVD) growth process.
Indications of post-growth treatment.



August 4, 2025
IGI Report No LG724522084
CUSHION MODIFIED BRILLIANT
3.52 CARATS
FANCY INTENSE PINK
VVS 2
10.09 X 8.52 X 5.32 MM
62.4%
45.5%
14%
Thin To Medium (Faceted)
Pointed
EXCELLENT
EXCELLENT
STRONG
IGI LG724522084
Comments: This Laboratory Grown Diamond was created by Chemical Vapor Deposition (CVD) growth process.
Indications of post-growth treatment.