



**ELECTRONIC COPY**

## LABORATORY GROWN DIAMOND REPORT

LG724511772  
Report verification at [igi.org](https://igi.org)

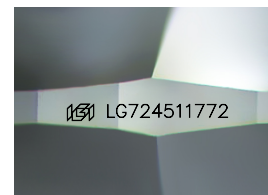
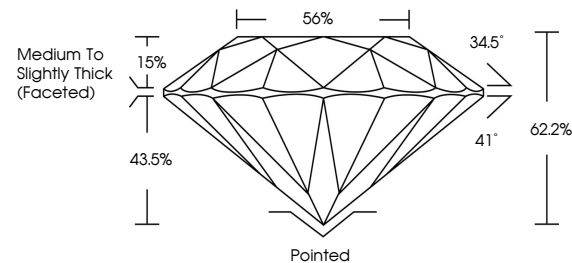
July 24, 2025	
IGI Report Number	LG724511772
Description	LABORATORY GROWN DIAMOND
Shape and Cutting Style	ROUND BRILLIANT
Measurements	9.19 - 9.25 X 5.74 MM
GRADING RESULTS	
Carat Weight	3.00 CARATS
Color Grade	E
Clarity Grade	VS 2
Cut Grade	IDEAL

### ADDITIONAL GRADING INFORMATION

Polish	EXCELLENT
Symmetry	EXCELLENT
Fluorescence	NONE
Inscription(s)	 LG724511772

Comments: This Laboratory Grown Diamond was created by Chemical Vapor Deposition (CVD) growth process.  
Type IIa

## PROPORTIONS



Sample Image Used

## COLOR

D E F G H I J Faint Very Light Light

## CLARITY

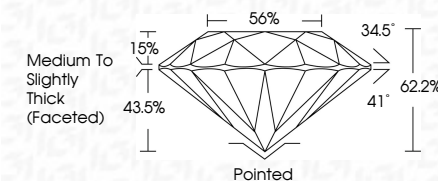
IF                      VS<sup>1-2</sup>                      VS<sup>1-2</sup>                      S<sup>1-2</sup>                      |<sup>1-3</sup>

Internally Flawless	Very Very Slightly Included	Very Slightly Included	Slightly Included	Included
------------------------	--------------------------------	---------------------------	----------------------	----------

## LABORATORY GROWN DIAMOND REPORT



July 24, 2025	
IGI Report Number	LG724511772
Description	LABORATORY GROWN DIAMOND
Shape and Cutting Style	ROUND BRILLIANT
Measurements	9.19 - 9.25 X 5.74 MM
GRADING RESULTS	
Carat Weight	3.00 CARATS
Color Grade	E
Clarity Grade	VS 2
Cut Grade	IDEAL



### ADDITIONAL GRADING INFORMATION

Polish	EXCELLENT
Symmetry	EXCELLENT
Fluorescence	NONE
Inscription(s)	 LG724511772
Comments: This Laboratory Grown Diamond was created by Chemical Vapor Deposition (CVD) growth process.	
Type IIa	



© IGI 2020, International Gemological Institute

FD - 10 20



THIS DOCUMENT WAS PRODUCED WITH THE FOLLOWING SECURITY MEASURES: SPECIAL DOCUMENT PAPER, INK SCREENS, WATERMARK, BACKGROUND DESIGNS, HOLOGRAM AND OTHER SECURITY FEATURES NOT LISTED AND DO EXCEED DOCUMENT SECURITY INDUSTRY GUIDELINES

**www.igi.org**

July 24, 2025  
GI Report No LG724511772

IGI Report No LG72  
 POUND BRILLIANT

9.19 - 9.25 X 5.74 MM

9.19 - 9.23 X 3.74 Mill	3.00 CARATS
Carat Weight	

Color Grade

	VS 2	IDEAL
Clarity Grade		
Cut Grade		

Depth 62.2%

	Table	Girdle	56%
Medium To Silicified			

**Thick (Faceted)**

Culet	Pointed
Polish	Excellent

**EXCELLENT**

**EXCELLENT**

Fluorescence	Subscription(s)	NONE
	1681   G724511772	

1567-2017

**Comments:**  
This Laboratory Grown Diamond was  
created by: Chemical Vapor Deposition

Created by Chemical Vapor Deposition (CVD) growth process.  
Type IIa

types