



**ELECTRONIC COPY**

LG724510767  
Report verification at igi.org



August 8, 2025

IGI Report Number **LG724510767**

Description **LABORATORY GROWN DIAMOND**

Shape and Cutting Style **CUT CORNERED  
RECTANGULAR MODIFIED  
BRILLIANT**

Measurements **10.80 X 7.62 X 5.11 MM**

**GRADING RESULTS**

Carat Weight **4.08 CARATS**

Color Grade **FANCY VIVID YELLOW**

Clarity Grade **VVS 2**

August 8, 2025

IGI Report Number **LG724510767**

Description **LABORATORY GROWN DIAMOND**

Shape and Cutting Style **CUT CORNERED RECTANGULAR  
MODIFIED BRILLIANT**

Measurements **10.80 X 7.62 X 5.11 MM**

**GRADING RESULTS**

Carat Weight **4.08 CARATS**

Color Grade **FANCY VIVID YELLOW**

Clarity Grade **VVS 2**

**ADDITIONAL GRADING INFORMATION**

Polish **EXCELLENT**

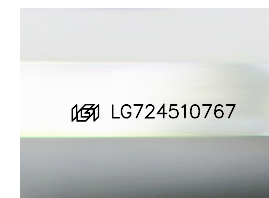
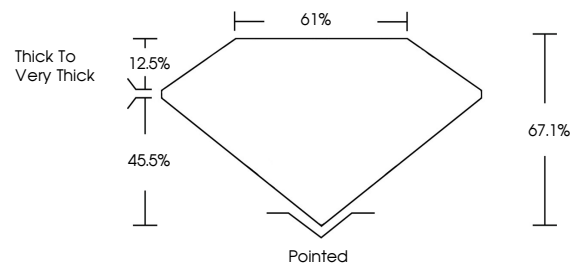
Symmetry **EXCELLENT**

Fluorescence **NONE**

Inscription(s) **IGI LG724510767**

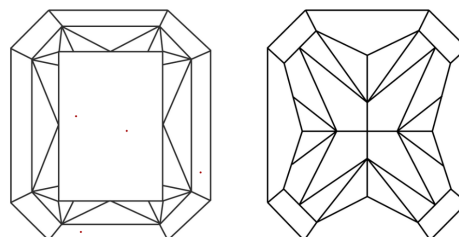
Comments: This Laboratory Grown Diamond was created by Chemical Vapor Deposition (CVD) growth process.

**PROPORTIONS**



Sample Image Used

**CLARITY CHARACTERISTICS**



**KEY TO SYMBOLS**

Red symbols indicate internal characteristics.  
Green symbols indicate external characteristics.

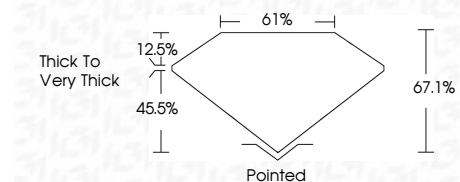
**COLOR**

D E F G H I J Faint Very Light Light

**CLARITY**

IF WS<sup>1-2</sup> VS<sup>1-2</sup> SI<sup>1-2</sup> I<sup>1-3</sup>

Internally Flawless Very Very Slightly Included Very Slightly Included Slightly Included Included



**ADDITIONAL GRADING INFORMATION**

Polish **EXCELLENT**

Symmetry **EXCELLENT**

Fluorescence **NONE**

Inscription(s) **IGI LG724510767**

Comments: This Laboratory Grown Diamond was created by Chemical Vapor Deposition (CVD) growth process.



**IGI**



August 8, 2025  
IGI Report No LG724510767  
CUT CORNERED RECT. MODIFIED BRILLIANT

4.08 CARATS  
Carat Weight  
FANCY VIVID YELLOW  
Color Grade

VVS 2  
Clarity Grade

67.1%  
Depth

61%  
Table

Thick to Very Thick  
Girdle

Pointed  
Culet

EXCELLENT  
Polish

EXCELLENT  
Symmetry

NONE  
Fluorescence

IGI LG724510767  
Inscription(s)

Comments: This Laboratory Grown Diamond was created by Chemical Vapor Deposition (CVD) growth process.