



ELECTRONIC COPY

LG724510636 Report verification at igi.org



August 8, 2025 IGI Report Number LG724510636 Description LABORATORY GROWN DIAMOND Shape and Cutting Style CUT CORNERED RECTANGULAR MODIFIED BRILLIANT Measurements 7.82 X 5.42 X 3.81 MM GRADING RESULTS Carat Weight 1.58 CARAT Color Grade FANCY INTENSE YELLOW Clarity Grade VS 1

August 8, 2025 IGI Report Number LG724510636 Description LABORATORY GROWN DIAMOND Shape and Cutting Style CUT CORNERED RECTANGULAR MODIFIED BRILLIANT Measurements 7.82 X 5.42 X 3.81 MM

GRADING RESULTS

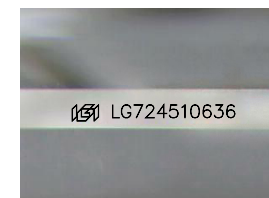
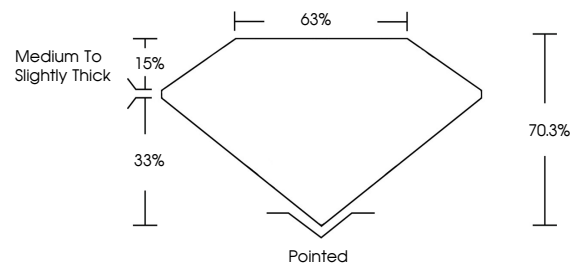
Carat Weight 1.58 CARAT Color Grade FANCY INTENSE YELLOW Clarity Grade VS 1

ADDITIONAL GRADING INFORMATION

Polish EXCELLENT Symmetry EXCELLENT Fluorescence NONE Inscription(s) IGI LG724510636

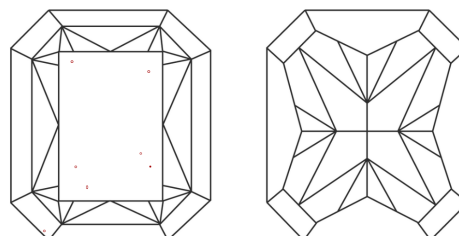
Comments: This Laboratory Grown Diamond was created by Chemical Vapor Deposition (CVD) growth process.

PROPORTIONS



Sample Image Used

CLARITY CHARACTERISTICS



KEY TO SYMBOLS

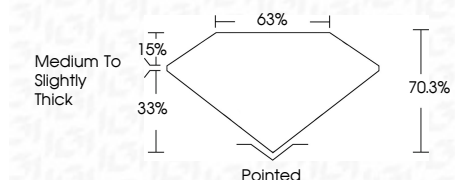
Red symbols indicate internal characteristics. Green symbols indicate external characteristics.

COLOR

D E F G H I J Faint Very Light Light

CLARITY

IF WS 1-2 VS 1-2 SI 1-2 I 1-3 Internally Flawless Very Very Slightly Included Very Slightly Included Slightly Included Included



ADDITIONAL GRADING INFORMATION

Polish EXCELLENT Symmetry EXCELLENT Fluorescence NONE Inscription(s) IGI LG724510636 Comments: This Laboratory Grown Diamond was created by Chemical Vapor Deposition (CVD) growth process.



August 8, 2025 IGI Report No LG724510636 CUT CORNERED RECT. MODIFIED BRILLIANT 7.82 X 5.42 X 3.81 MM 1.58 CARAT FANCY INTENSE YELLOW VS 1 70.3% 63% Medium to Slightly Thick Pointed EXCELLENT EXCELLENT NONE NONE IGI LG724510636 Comments: This Laboratory Grown Diamond was created by Chemical Vapor Deposition (CVD) growth process.