



**LABORATORY GROWN DIAMOND REPORT**

August 1, 2025  
 IGI Report Number **LG724510207**  
 Description **LABORATORY GROWN DIAMOND**  
 Shape and Cutting Style **ROUND BRILLIANT**  
 Measurements **4.51 - 4.54 X 2.77 MM**

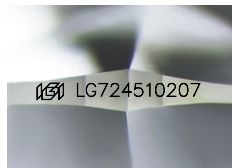
**GRADING RESULTS**

Carat Weight **0.35 CARAT**  
 Color Grade **FANCY VIVID PINK**  
 Clarity Grade **VS 1**  
 Cut Grade **IDEAL**

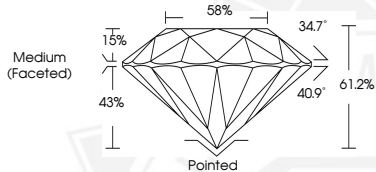
**ADDITIONAL GRADING INFORMATION**

Polish **EXCELLENT**  
 Symmetry **VERY GOOD**  
 Fluorescence **STRONG**  
 Inscription(s) **IGI LG724510207**

Comments: This Laboratory Grown Diamond was created by Chemical Vapor Deposition (CVD) growth process. Indications of post-growth treatment.



Sample Image Used



August 1, 2025  
 IGI Report Number **LG724510207**  
 ROUND BRILLIANT  
 LABORATORY GROWN DIAMOND  
 4.51 - 4.54 X 2.77 MM  
 Carat Weight **0.35 CARAT**  
 Color Grade **FANCY VIVID PINK**  
 Clarity Grade **VS 1**  
 Cut Grade **IDEAL**  
 Polish **EXCELLENT**  
 Symmetry **VERY GOOD**  
 Fluorescence **STRONG**  
 Inscription(s) **IGI LG724510207**

Comments: This Laboratory Grown Diamond was created by Chemical Vapor Deposition (CVD) growth process. Indications of post-growth treatment.



August 1, 2025  
 IGI Report Number **LG724510207**  
 ROUND BRILLIANT  
 LABORATORY GROWN DIAMOND  
 4.51 - 4.54 X 2.77 MM  
 Carat Weight **0.35 CARAT**  
 Color Grade **FANCY VIVID PINK**  
 Clarity Grade **VS 1**  
 Cut Grade **IDEAL**  
 Polish **EXCELLENT**  
 Symmetry **VERY GOOD**  
 Fluorescence **STRONG**  
 Inscription(s) **IGI LG724510207**

Comments: This Laboratory Grown Diamond was created by Chemical Vapor Deposition (CVD) growth process. Indications of post-growth treatment.



THIS DOCUMENT WAS PRODUCED WITH THE FOLLOWING SECURITY MEASURES: SPECIAL DOCUMENT PAPER, INK SCREENS, WATERMARK, BACKGROUND DESIGNS, HOLOGRAM AND OTHER SECURITY FEATURES NOT LISTED AND DO EXCEED DOCUMENT SECURITY INDUSTRY GUIDELINES.