



**LABORATORY GROWN DIAMOND REPORT**

August 1, 2025  
 IGI Report Number **LG724510198**  
 Description **LABORATORY GROWN DIAMOND**  
 Shape and Cutting Style **ROUND BRILLIANT**  
 Measurements **4.40 - 4.43 X 2.62 MM**

**GRADING RESULTS**

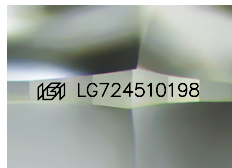
Carat Weight **0.31 CARAT**  
 Color Grade **FANCY INTENSE PINK**  
 Clarity Grade **VS 1**  
 Cut Grade **IDEAL**

**ADDITIONAL GRADING INFORMATION**

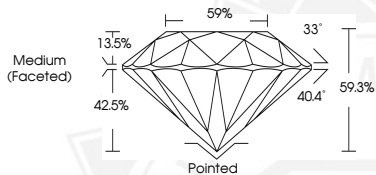
Polish **EXCELLENT**  
 Symmetry **EXCELLENT**  
 Fluorescence **SLIGHT**  
 Inscription(s) **IGI LG724510198**

Comments: This Laboratory Grown Diamond was created by  
 Chemical Vapor Deposition (CVD) growth process.  
 Indications of post-growth treatment.

Secondary color: Brown



Sample Image Used



August 1, 2025  
 IGI Report Number **LG724510198**  
 ROUND BRILLIANT  
 LABORATORY GROWN DIAMOND  
 4.40 - 4.43 X 2.62 MM  
 Carat Weight **0.31 CARAT**  
 Color Grade **FANCY INTENSE PINK**  
 Clarity Grade **VS 1**  
 Cut Grade **IDEAL**  
 Polish **EXCELLENT**  
 Symmetry **EXCELLENT**  
 Fluorescence **SLIGHT**  
 Inscription(s) **IGI LG724510198**

Comments: This Laboratory Grown Diamond was created by  
 Chemical Vapor Deposition (CVD) growth process. Indications of  
 post-growth treatment.  
 Secondary color: Brown



August 1, 2025  
 IGI Report Number **LG724510198**  
 ROUND BRILLIANT  
 LABORATORY GROWN DIAMOND  
 4.40 - 4.43 X 2.62 MM  
 Carat Weight **0.31 CARAT**  
 Color Grade **FANCY INTENSE PINK**  
 Clarity Grade **VS 1**  
 Cut Grade **IDEAL**  
 Polish **EXCELLENT**  
 Symmetry **EXCELLENT**  
 Fluorescence **SLIGHT**  
 Inscription(s) **IGI LG724510198**

Comments: This Laboratory Grown Diamond was created by  
 Chemical Vapor Deposition (CVD) growth process. Indications of  
 post-growth treatment.  
 Secondary color: Brown

THIS DOCUMENT WAS PRODUCED WITH THE FOLLOWING SECURITY MEASURES: SPECIAL DOCUMENT PAPER, INK SCREENS, WATERMARK, BACKGROUND DESIGNS, HOLOGRAM AND OTHER SECURITY FEATURES NOT LISTED AND DO EXCEED DOCUMENT SECURITY INDUSTRY GUIDELINES.