



**ELECTRONIC COPY**

## LABORATORY GROWN DIAMOND REPORT

|                         |                          |
|-------------------------|--------------------------|
| August 7, 2025          |                          |
| IGI Report Number       | LG724509392              |
| Description             | LABORATORY GROWN DIAMOND |
| Shape and Cutting Style | ROUND BRILLIANT          |
| Measurements            | 13.83 - 13.92 X 8.11 MM  |
| GRADING RESULTS         |                          |
| Carat Weight            | 9.50 CARATS              |
| Color Grade             | F                        |
| Clarity Grade           | VVS 2                    |
| Cut Grade               | EXCELLENT                |

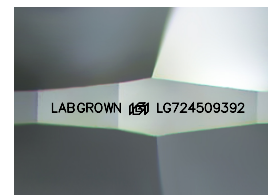
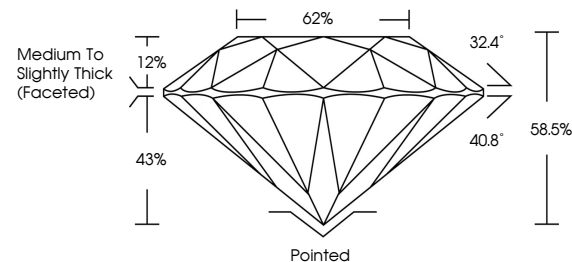
### ADDITIONAL GRADING INFORMATION

|                |                         |
|----------------|-------------------------|
| Polish         | EXCELLENT               |
| Symmetry       | EXCELLENT               |
| Fluorescence   | NONE                    |
| Inscription(s) | LABGROWN 16 LG724509392 |

Comments: This Laboratory Grown Diamond was created by Chemical Vapor Deposition (CVD) growth process.  
Type IIa

LG724509392  
Report verification at [igi.org](https://igi.org)

## PROPORTIONS



Sample Image Used

## COLOR

D E F G H I J Faint Very Light Light

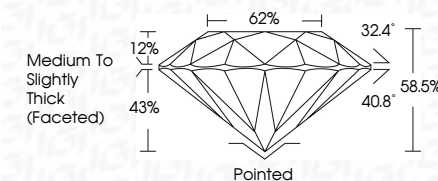
## CLARITY

| IF                  | VVS <sup>1-2</sup>          | VS <sup>1-2</sup>      | SI <sup>1-2</sup> | I <sup>1-3</sup> |
|---------------------|-----------------------------|------------------------|-------------------|------------------|
| Internally Flawless | Very Very Slightly Included | Very Slightly Included | Slightly Included | Included         |

## LABORATORY GROWN DIAMOND REPORT



|                         |                          |
|-------------------------|--------------------------|
| August 7, 2025          |                          |
| IGI Report Number       | LG724509392              |
| Description             | LABORATORY GROWN DIAMOND |
| Shape and Cutting Style | ROUND BRILLIANT          |
| Measurements            | 13.83 - 13.92 X 8.11 MM  |
| GRADING RESULTS         |                          |
| Carat Weight            | 9.50 CARATS              |
| Color Grade             | F                        |
| Clarity Grade           | VVS 2                    |
| Cut Grade               | EXCELLENT                |



### ADDITIONAL GRADING INFORMATION

|  |                           |
|--|---------------------------|
| Polish   | EXCELLENT                 |
| Symmetry   | EXCELLENT                 |
| Fluorescence   | NONE                      |
| Inscription(s)   | LABGROWN (16) LG724509392 |
| Comments: This Laboratory Grown Diamond was created by Chemical Vapor Deposition (CVD) growth process.<br>Type IIa |                           |



© IGI 2020, International Gemological Institute

FD - 10 20



THIS DOCUMENT WAS PRODUCED WITH THE FOLLOWING SECURITY MEASURES: SPECIAL DOCUMENT PAPER, INK SCREENS, WATERMARK, BACKGROUND DESIGNS, HOLOGRAM AND OTHER SECURITY FEATURES NOT LISTED AND DO EXCEED DOCUMENT SECURITY INDUSTRY GUIDELINES

**www.igi.org**

