



**ELECTRONIC COPY**

LG724507015  
Report verification at [igi.org](http://igi.org)



July 23, 2025

IGI Report Number **LG724507015**

Description **LABORATORY GROWN DIAMOND**

Shape and Cutting Style **EMERALD CUT**

Measurements **8.11 X 5.62 X 3.89 MM**

**GRADING RESULTS**

Carat Weight **1.67 CARAT**

Color Grade **F**

Clarity Grade **VVS 1**

July 23, 2025

IGI Report Number **LG724507015**

Description **LABORATORY GROWN DIAMOND**

Shape and Cutting Style **EMERALD CUT**

Measurements **8.11 X 5.62 X 3.89 MM**

**GRADING RESULTS**

Carat Weight **1.67 CARAT**

Color Grade **F**

Clarity Grade **VVS 1**

**ADDITIONAL GRADING INFORMATION**

Polish **EXCELLENT**

Symmetry **EXCELLENT**

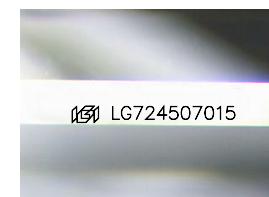
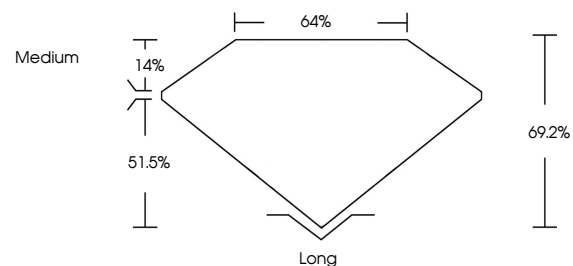
Fluorescence **NONE**

Inscription(s) **IGI LG724507015**

Comments: As Grown - No indication of post-growth treatment.

This Laboratory Grown Diamond was created by High Pressure High Temperature (HPHT) growth process. Type II

**PROPORTIONS**



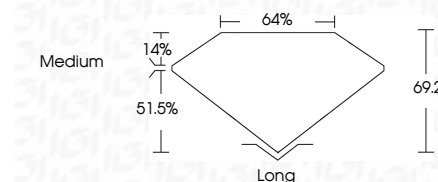
Sample Image Used

**COLOR**

D E F G H I J Faint Very Light Light

**CLARITY**

IF	VS <sup>1-2</sup>	VS <sup>1-2</sup>	SI <sup>1-2</sup>	I <sup>1-3</sup>
Internally Flawless	Very Very Slightly Included	Very Slightly Included	Slightly Included	Included



**ADDITIONAL GRADING INFORMATION**

Polish **EXCELLENT**

Symmetry **EXCELLENT**

Fluorescence **NONE**

Inscription(s) **IGI LG724507015**

Comments: As Grown - No indication of post-growth treatment.

This Laboratory Grown Diamond was created by High Pressure High Temperature (HPHT) growth process. Type II



**IGI**



July 23, 2025	IGI Report No LG724507015	EMERALD CUT	1.67 CARAT	F	VVS 1	64%	51.5%	Medium	Long	EXCELLENT	EXCELLENT	NONE	IGI LG724507015
8.11 X 5.62 X 3.89 MM	Carat Weight	Color Grade	Clarity Grade	Table	Depth	Girdle	Culet	Polish	Symmetry	Fluorescence	Inscription(s)	Comments: As Grown - No indication of post-growth treatment. This Laboratory Grown Diamond was created by High Pressure High Temperature (HPHT) growth process. Type II	