



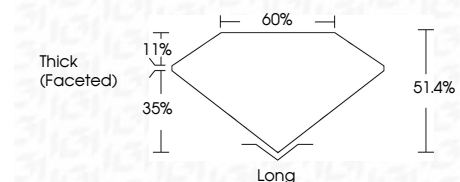
ELECTRONIC COPY

LG724505234
Report verification at igi.org



July 26, 2025
IGI Report Number **LG724505234**
Description **LABORATORY GROWN DIAMOND**
Shape and Cutting Style **MODIFIED LEAF STEP CUT**
Measurements **10.14 X 6.93 X 3.56 MM**

GRADING RESULTS
Carat Weight **2.04 CARATS**
Color Grade **D**
Clarity Grade **VVS 2**



ADDITIONAL GRADING INFORMATION
Polish **VERY GOOD**
Symmetry **EXCELLENT**
Fluorescence **NONE**
Inscription(s) **IGI LG724505234**
Comments: This Laboratory Grown Diamond was created by Chemical Vapor Deposition (CVD) growth process. Type IIa



July 26, 2025
IGI Report No LG724505234
MODIFIED LEAF STEP CUT
10.14 X 6.93 X 3.56 MM
2.04 CARATS
D
2.04 CARATS
VVS 2
51.4%
60%
Thick (Faceted)
Long
VERY GOOD
EXCELLENT
NONE
IGI LG724505234
Comments: This Laboratory Grown Diamond was created by Chemical Vapor Deposition (CVD) growth process. Type IIa

LABORATORY GROWN DIAMOND REPORT

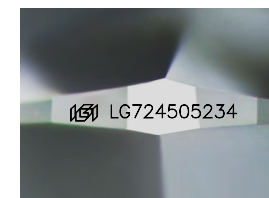
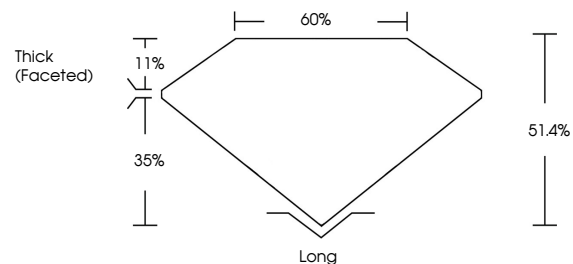
July 26, 2025
IGI Report Number **LG724505234**
Description **LABORATORY GROWN DIAMOND**
Shape and Cutting Style **MODIFIED LEAF STEP CUT**
Measurements **10.14 X 6.93 X 3.56 MM**

GRADING RESULTS
Carat Weight **2.04 CARATS**
Color Grade **D**
Clarity Grade **VVS 2**

ADDITIONAL GRADING INFORMATION
Polish **VERY GOOD**
Symmetry **EXCELLENT**
Fluorescence **NONE**
Inscription(s) **IGI LG724505234**

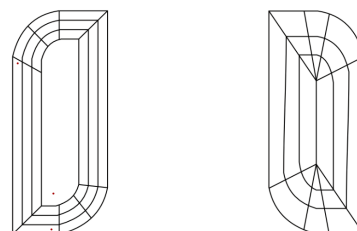
Comments: This Laboratory Grown Diamond was created by Chemical Vapor Deposition (CVD) growth process. Type IIa

PROPORTIONS



Sample Image Used

CLARITY CHARACTERISTICS



KEY TO SYMBOLS

Red symbols indicate internal characteristics.
Green symbols indicate external characteristics.

COLOR

D E F G H I J Faint Very Light Light

CLARITY

IF	VS ¹⁻²	VS ¹⁻²	SI ¹⁻²	I ¹⁻³
Internally Flawless	Very Very Slightly Included	Very Slightly Included	Slightly Included	Included

