



ELECTRONIC COPY

LG724503908
Report verification at igi.org



July 22, 2025

IGI Report Number **LG724503908**

Description **LABORATORY GROWN DIAMOND**

Shape and Cutting Style **KITE STEP CUT**

Measurements **13.35 X 8.69 X 5.39 MM**

GRADING RESULTS

Carat Weight **3.03 CARATS**

Color Grade **D**

Clarity Grade **VVS 2**

LABORATORY GROWN DIAMOND REPORT

July 22, 2025

IGI Report Number **LG724503908**

Description **LABORATORY GROWN DIAMOND**

Shape and Cutting Style **KITE STEP CUT**

Measurements **13.35 X 8.69 X 5.39 MM**

GRADING RESULTS

Carat Weight **3.03 CARATS**

Color Grade **D**

Clarity Grade **VVS 2**

ADDITIONAL GRADING INFORMATION

Polish **EXCELLENT**

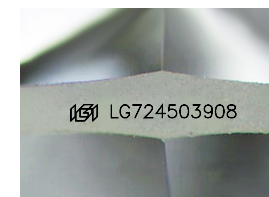
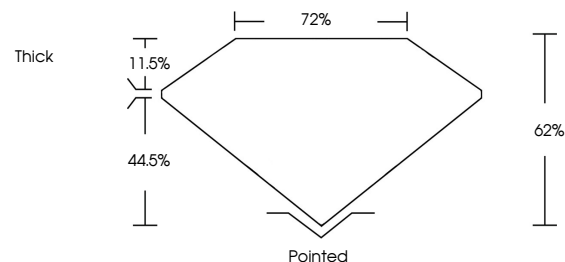
Symmetry **EXCELLENT**

Fluorescence **NONE**

Inscription(s) **IGI LG724503908**

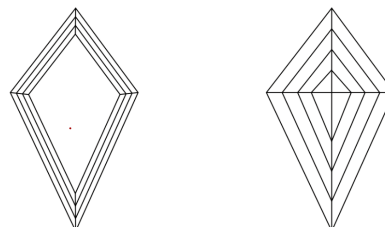
Comments: This Laboratory Grown Diamond was created by Chemical Vapor Deposition (CVD) growth process.
Type IIa

PROPORTIONS



Sample Image Used

CLARITY CHARACTERISTICS



KEY TO SYMBOLS

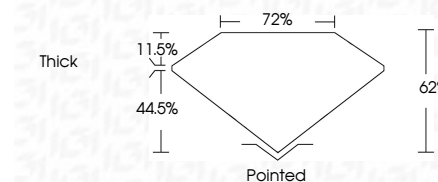
Red symbols indicate internal characteristics.
Green symbols indicate external characteristics.

COLOR

D E F G H I J Faint Very Light Light

CLARITY

IF	VS ¹⁻²	VS ¹⁻²	SI ¹⁻²	I ¹⁻³
Internally Flawless	Very Very Slightly Included	Very Slightly Included	Slightly Included	Included



ADDITIONAL GRADING INFORMATION

Polish **EXCELLENT**

Symmetry **EXCELLENT**

Fluorescence **NONE**

Inscription(s) **IGI LG724503908**

Comments: This Laboratory Grown Diamond was created by Chemical Vapor Deposition (CVD) growth process.
Type IIa



IGI



July 22, 2025
IGI Report No LG724503908
KITE STEP CUT

3.03 CARATS
D

13.35 X 8.69 X 5.39 MM

Carat Weight
Color Grade
Clarity Grade
Depth
Table
Girdle

VVS 2
D
VVS 2
62%
72%

Thick
Pointed
EXCELLENT
EXCELLENT
NONE
IGI LG724503908

Culet
Polish
Symmetry
Fluorescence
Inscription(s)

Comments: This Laboratory Grown Diamond was created by Chemical Vapor Deposition (CVD) growth process.
Type IIa