



**ELECTRONIC COPY**

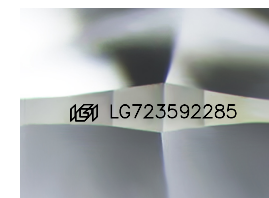
LG723592285  
Report verification at [igi.org](http://igi.org)



July 22, 2025  
IGI Report Number **LG723592285**  
Description **LABORATORY GROWN DIAMOND**

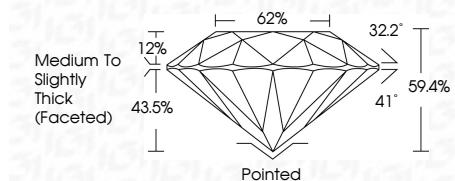
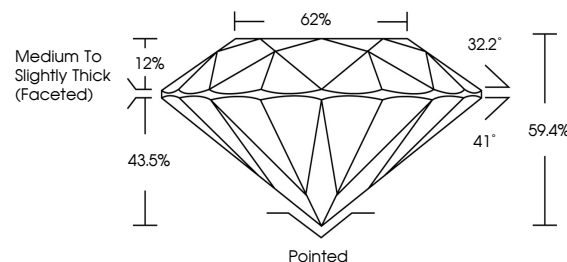
Shape and Cutting Style **ROUND BRILLIANT**  
Measurements **10.24 - 10.26 X 6.09 MM**

**GRADING RESULTS**  
Carat Weight **3.98 CARATS**  
Color Grade **E**  
Clarity Grade **VVS 2**  
Cut Grade **EXCELLENT**

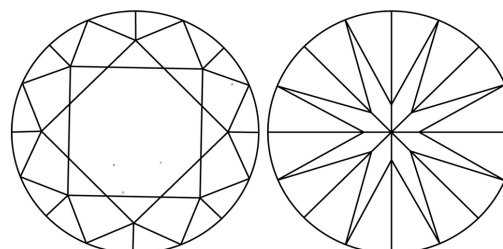


Sample Image Used

**PROPORTIONS**



**CLARITY CHARACTERISTICS**



**KEY TO SYMBOLS**

Red symbols indicate internal characteristics.  
Green symbols indicate external characteristics.

**COLOR**

D E F G H I J Faint Very Light Light

**CLARITY**

IF	WS <sup>1-2</sup>	VS <sup>1-2</sup>	SI <sup>1-2</sup>	I <sup>1-3</sup>
Internally Flawless	Very Very Slightly Included	Very Slightly Included	Slightly Included	Included

**ADDITIONAL GRADING INFORMATION**

Polish **EXCELLENT**  
Symmetry **EXCELLENT**  
Fluorescence **NONE**  
Inscription(s) **(IGI) LG723592285**  
Comments: This Laboratory Grown Diamond was created by Chemical Vapor Deposition (CVD) growth process.  
Type IIa



**IGI**



July 22, 2025  
IGI Report No LG723592285  
ROUND BRILLIANT  
10.24 - 10.26 X 6.09 MM  
3.98 CARATS  
E  
VVS 2  
EXCELLENT  
62%  
59.4%  
Medium To Slightly Thick (Faceted)  
Pointed  
EXCELLENT  
EXCELLENT  
NONE  
IGI LG723592285  
Comments: This Laboratory Grown Diamond was created by Chemical Vapor Deposition (CVD) growth process.  
Type IIa