

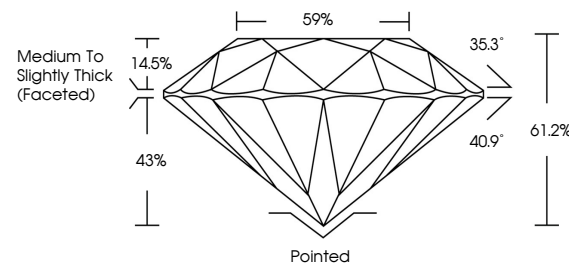


ELECTRONIC COPY

LABORATORY GROWN DIAMOND REPORT

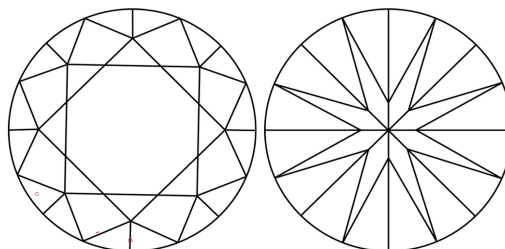
LG723589789
Report verification at igi.org

PROPORTIONS



Sample Image Used

CLARITY CHARACTERISTICS



KEY TO SYMBOLS

Red symbols indicate internal characteristics.
Green symbols indicate external characteristics.

COLOR

D E F G H I J Faint Very Light Light

CLARITY

IF WS¹⁻² VS¹⁻² SI¹⁻² |¹⁻³

Internally Flawless	Very Very Slightly Included	Very Slightly Included	Slightly Included	Included
------------------------	--------------------------------	---------------------------	----------------------	----------



© IGI 2020, International Gemological Institute

FD - 10 20

www.igi.org

LABORATORY GROWN DIAMOND REPORT



July 21, 2025

IGI Report Number **LG723589789**Description **LABORATORY GROWN DIAMOND**Shape and Cutting Style **ROUND BRILLIANT**

Measurements 6.43 - 6.46 X 3.95 MM

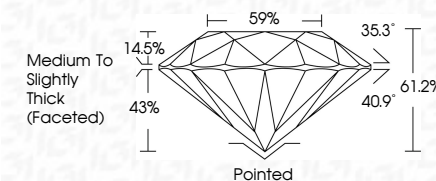
GRADING RESULTS

Carat Weight 1.02 CARAT

Color Grade D

Clarity Grade **VS 2**

Cut Grade **IDEAL**



ADDITIONAL GRADING INFORMATION

Polish VERY GOOD

Symmetry VERY GOOD

Fluorescence **NONE**Inscription(s)  LG723589789

Comments: As Grown - No indication of post-growth treatment.

This Laboratory Grown Diamond was created by High Pressure High Temperature (HPHT) growth process.

Type II



JULY 21, 2025 GJ Report No. G272389789 ROUND BRILLIANT 4.43 - 4.46 X 3.95 MM	Carat Weight Color Grade Clarity Grade Cut Grade Depth Table Girdle Culet Polish Symmetry Fluorescence Inscription(s)	1.02 CARAT D VS2 IDEAL 61.2% 59% Medium to Slightly Thick (Excellent) Pointed VERY GOOD VERY GOOD NONE g891 G272389789	Comments: As Grown - No indication of post-growth treatment. This laboratory created by High Pressure High Temperature (HPHT) growth process. Image 1
---	--	--	---