



ELECTRONIC COPY

LG723587360
Report verification at igi.org



July 22, 2025
IGI Report Number **LG723587360**
Description **LABORATORY GROWN DIAMOND**
Shape and Cutting Style **CUSHION MODIFIED BRILLIANT**
Measurements **10.16 X 8.13 X 5.67 MM**
GRADING RESULTS
Carat Weight **3.97 CARATS**
Color Grade **G**
Clarity Grade **VS 1**

LABORATORY GROWN DIAMOND REPORT

July 22, 2025
IGI Report Number **LG723587360**
Description **LABORATORY GROWN DIAMOND**
Shape and Cutting Style **CUSHION MODIFIED BRILLIANT**
Measurements **10.16 X 8.13 X 5.67 MM**

GRADING RESULTS

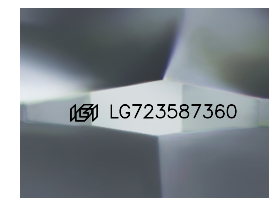
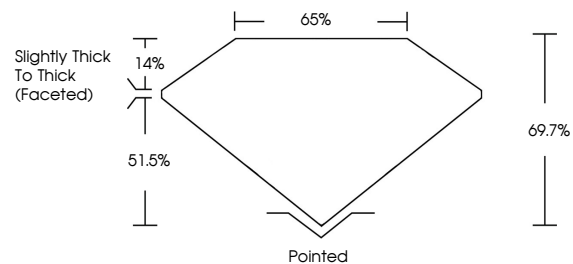
Carat Weight **3.97 CARATS**
Color Grade **G**
Clarity Grade **VS 1**

ADDITIONAL GRADING INFORMATION

Polish **EXCELLENT**
Symmetry **EXCELLENT**
Fluorescence **NONE**
Inscription(s) **IGI LG723587360**

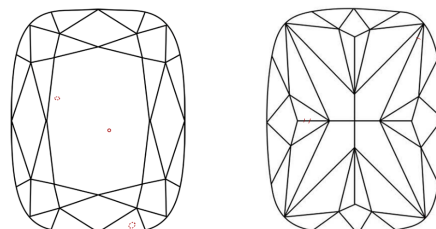
Comments: This Laboratory Grown Diamond was created by Chemical Vapor Deposition (CVD) growth process.
Type IIa

PROPORTIONS



Sample Image Used

CLARITY CHARACTERISTICS



KEY TO SYMBOLS

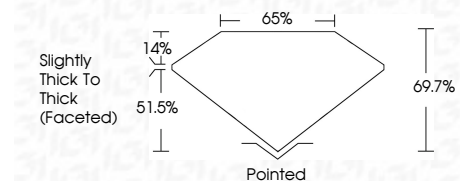
Red symbols indicate internal characteristics.
Green symbols indicate external characteristics.

COLOR

D E F G H I J Faint Very Light Light

CLARITY

IF	VS ¹⁻²	VS ¹⁻²	SI ¹⁻²	I ¹⁻³
Internally Flawless	Very Very Slightly Included	Very Slightly Included	Slightly Included	Included



ADDITIONAL GRADING INFORMATION

Polish **EXCELLENT**
Symmetry **EXCELLENT**
Fluorescence **NONE**
Inscription(s) **IGI LG723587360**
Comments: This Laboratory Grown Diamond was created by Chemical Vapor Deposition (CVD) growth process.
Type IIa



July 22, 2025
IGI Report No LG723587360
CUSHION MODIFIED BRILLIANT
10.16 X 8.13 X 5.67 MM
Carat Weight 3.97 CARATS
Color Grade G
Clarity Grade VS 1
Depth 69.7%
Table 65%
Girdle Slightly Thick To Thick (Faceted)
Culet Pointed
Polish EXCELLENT
Symmetry EXCELLENT
Fluorescence NONE
Inscription(s) IGI LG723587360
Comments: This Laboratory Grown Diamond was created by Chemical Vapor Deposition (CVD) growth process.
Type IIa