



ELECTRONIC COPY

LG723576106
Report verification at igi.org



August 5, 2025
IGI Report Number LG723576106
Description LABORATORY GROWN DIAMOND
Shape and Cutting Style CUT CORNERED RECTANGULAR MIXED CUT
Measurements 9.40 X 6.43 X 4.08 MM
GRADING RESULTS
Carat Weight 2.52 CARATS
Color Grade D
Clarity Grade VVS 1

LABORATORY GROWN DIAMOND REPORT

August 5, 2025
IGI Report Number LG723576106
Description LABORATORY GROWN DIAMOND
Shape and Cutting Style CUT CORNERED RECTANGULAR MIXED CUT
Measurements 9.40 X 6.43 X 4.08 MM

GRADING RESULTS

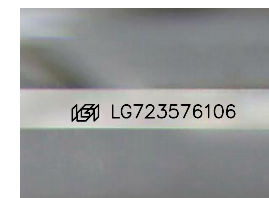
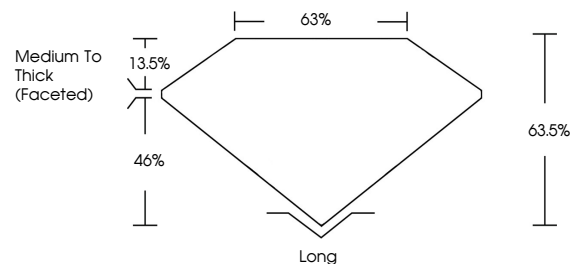
Carat Weight 2.52 CARATS
Color Grade D
Clarity Grade VVS 1

ADDITIONAL GRADING INFORMATION

Polish EXCELLENT
Symmetry EXCELLENT
Fluorescence NONE
Inscription(s) IGI LG723576106

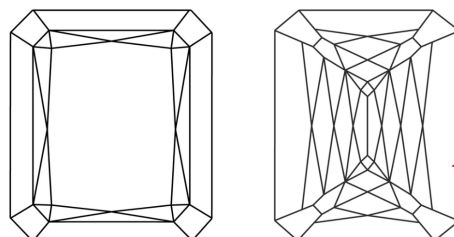
Comments: This Laboratory Grown Diamond was created by Chemical Vapor Deposition (CVD) growth process. Type IIa

PROPORTIONS



Sample Image Used

CLARITY CHARACTERISTICS



KEY TO SYMBOLS

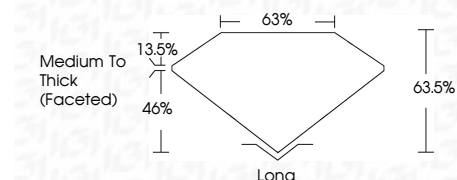
Red symbols indicate internal characteristics.
Green symbols indicate external characteristics.

COLOR

D E F G H I J Faint Very Light Light

CLARITY

IF WS 1-2 VS 1-2 SI 1-2 I 1-3
Internally Flawless Very Very Slightly Included Very Slightly Included Slightly Included Included



ADDITIONAL GRADING INFORMATION

Polish EXCELLENT
Symmetry EXCELLENT
Fluorescence NONE
Inscription(s) IGI LG723576106
Comments: This Laboratory Grown Diamond was created by Chemical Vapor Deposition (CVD) growth process. Type IIa



August 5, 2025
IGI Report No LG723576106
CUT CORNERED RECT. MIXED CUT
9.40 X 6.43 X 4.08 MM
2.52 CARATS
D
VVS 1
63.5%
46%
Medium To Thick (Faceted)
Long
EXCELLENT
EXCELLENT
NONE
IGI LG723576106
Comments: This Laboratory Grown Diamond was created by Chemical Vapor Deposition (CVD) growth process. Type IIa