



ELECTRONIC COPY

LABORATORY GROWN DIAMOND REPORT

LG723575233
Report verification at igi.org

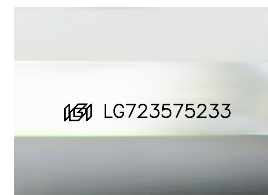
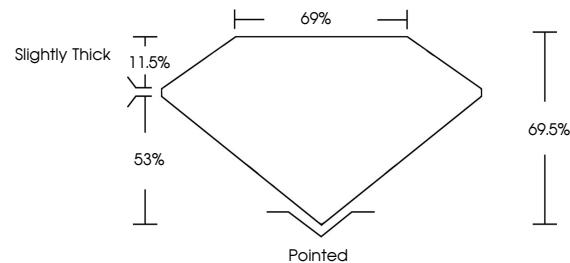
| | |
|-------------------------|--------------------------|
| July 24, 2025 | |
| IGI Report Number | LG723575233 |
| Description | LABORATORY GROWN DIAMOND |
| Shape and Cutting Style | PRINCESS CUT |
| Measurements | 5.60 X 5.41 X 3.76 MM |
| GRADING RESULTS | |
| Carat Weight | 1.02 CARAT |
| Color Grade | D |
| Clarity Grade | VVS 2 |

ADDITIONAL GRADING INFORMATION

| | |
|----------------|-----------------|
| Polish | VERY GOOD |
| Symmetry | VERY GOOD |
| Fluorescence | NONE |
| Inscription(s) | 151 LG723575233 |

Comments: This Laboratory Grown Diamond was created by Chemical Vapor Deposition (CVD) growth process.
Type IIa

PROPORTIONS



Sample Image Used

COLOR

D E F G H I J Faint Very Light Light

CLARITY

| IF | VVS ¹⁻² | VS ¹⁻² | SI ¹⁻² | I ¹⁻³ |
|---------------------|-----------------------------|------------------------|-------------------|------------------|
| Internally Flawless | Very Very Slightly Included | Very Slightly Included | Slightly Included | Included |

LABORATORY GROWN DIAMOND REPORT



| | |
|-------------------------|--------------------------|
| July 24, 2025 | |
| IGI Report Number | LG723575233 |
| Description | LABORATORY GROWN DIAMOND |
| Shape and Cutting Style | PRINCESS CUT |
| Measurements | 5.60 X 5.41 X 3.76 MM |
| GRADING RESULTS | |
| Carat Weight | 1.02 CARAT |
| Color Grade | D |
| Clarity Grade | VVS 2 |

ADDITIONAL GRADING INFORMATION

| | |
|--|----------------------------|
| Polish | VERY GOOD |
| Symmetry | VERY GOOD |
| Fluorescence | NONE |
| Inscription(s) | (G) LG723575233 |
| Comments: This Laboratory Grown Diamond was created by Chemical Vapor Deposition (CVD) growth process. | |
| Type IIa | |



www.igi.org

© IGI 2020, International Gemological Institute

FD - 10 20



THIS DOCUMENT WAS PRODUCED WITH THE FOLLOWING SECURITY MEASURES: SPECIAL DOCUMENT PAPER, INK SCREENS, WATERMARK, BACKGROUND DESIGNS, HOLOGRAM AND OTHER SECURITY FEATURES NOT LISTED AND DO EXCEED DOCUMENT SECURITY INDUSTRY GUIDELINE

July 24, 2025
 IGI Report No LG723575233
 PRINCESS CIT

| | |
|-----------------------|----------------|
| 5.60 X 5.41 X 3.76 MM | 1.02 CARAT |
| Carat Weight | D |
| Color Grade | VVS 2 |
| Clarity Grade | VS 5 |
| Depth | 69% |
| Table | 69% |
| Grade | Slightly Thick |
| Culet | Pointed |
| Polish | VERY GOOD |
| Symmetry | VERY GOOD |
| Fluorescence | NONE |

Comments:
This Laboratory Grown Diamond was
created by Chemical Vapor Deposition
(CVD) growth process.