



LABORATORY GROWN DIAMOND REPORT

July 25, 2025
 IGI Report Number **LG723571221**
 Description **LABORATORY GROWN DIAMOND**
 Shape and Cutting Style **HEPTAGONAL MODIFIED STEP CUT**
 Measurements **8.61 X 5.51 X 2.50 MM**

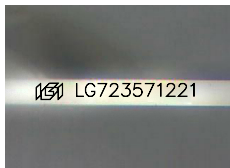
GRADING RESULTS

Carat Weight **0.86 CARAT**
 Color Grade **E**
 Clarity Grade **VS 2**

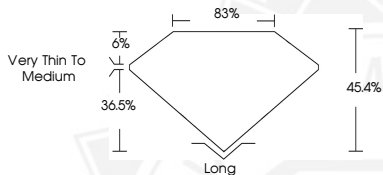
ADDITIONAL GRADING INFORMATION

Polish **VERY GOOD**
 Symmetry **VERY GOOD**
 Fluorescence **NONE**
 Inscription(s) **IGI LG723571221**

Comments: This Laboratory Grown Diamond was created by
 Chemical Vapor Deposition (CVD) growth process.
 Type IIa



Sample Image Used



July 25, 2025

IGI Report Number LG723571221
HEPTAGONAL MODIFIED STEP CUT
LABORATORY GROWN DIAMOND
8.61 X 5.51 X 2.50 MM

Carat Weight **0.86 CARAT**
 Color Grade **E**
 Clarity Grade **VS 2**
 Polish **VERY GOOD**
 Symmetry **VERY GOOD**
 Fluorescence **NONE**
 Inscription(s) **IGI LG723571221**

Comments: This Laboratory Grown
 Diamond was created by
 Chemical Vapor Deposition (CVD)
 growth process. Type IIa



July 25, 2025

IGI Report Number LG723571221
HEPTAGONAL MODIFIED STEP CUT
LABORATORY GROWN DIAMOND
8.61 X 5.51 X 2.50 MM

Carat Weight **0.86 CARAT**
 Color Grade **E**
 Clarity Grade **VS 2**
 Polish **VERY GOOD**
 Symmetry **VERY GOOD**
 Fluorescence **NONE**
 Inscription(s) **IGI LG723571221**

Comments: This Laboratory Grown
 Diamond was created by
 Chemical Vapor Deposition (CVD)
 growth process. Type IIa



THIS DOCUMENT WAS PRODUCED WITH THE FOLLOWING SECURITY MEASURES: SPECIAL DOCUMENT PAPER, INK SCREENS, WATERMARK, BACKGROUND DESIGNS, HOLOGRAM AND OTHER SECURITY FEATURES NOT LISTED AND DO EXCEED DOCUMENT SECURITY INDUSTRY GUIDELINES.