



ELECTRONIC COPY

LG723570061
Report verification at igi.org



July 22, 2025

IGI Report Number **LG723570061**

Description **LABORATORY GROWN DIAMOND**

Shape and Cutting Style **ROUND BRILLIANT**

Measurements **7.53 - 7.56 X 4.60 MM**

GRADING RESULTS

Carat Weight **1.61 CARAT**

Color Grade **F**

Clarity Grade **VVS 2**

Cut Grade **IDEAL**

July 22, 2025
IGI Report Number **LG723570061**
Description **LABORATORY GROWN DIAMOND**
Shape and Cutting Style **ROUND BRILLIANT**
Measurements **7.53 - 7.56 X 4.60 MM**

GRADING RESULTS

Carat Weight **1.61 CARAT**

Color Grade **F**

Clarity Grade **VVS 2**

Cut Grade **IDEAL**

ADDITIONAL GRADING INFORMATION

Polish **EXCELLENT**

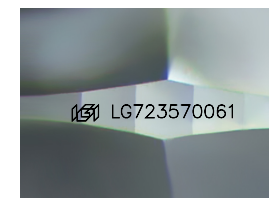
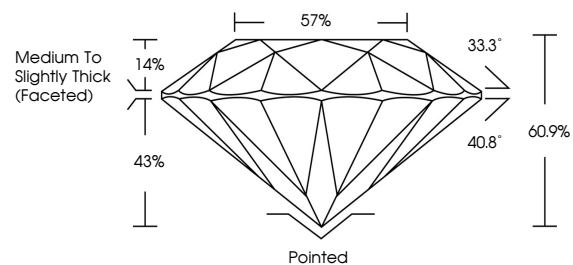
Symmetry **EXCELLENT**

Fluorescence **NONE**

Inscription(s) **IGI LG723570061**

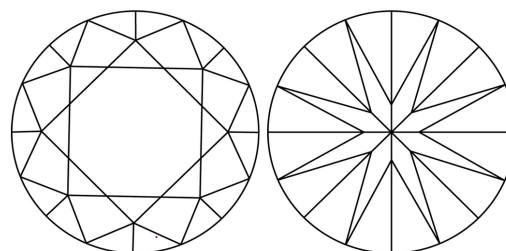
Comments: This Laboratory Grown Diamond was created by Chemical Vapor Deposition (CVD) growth process.
Type IIa

PROPORTIONS



Sample Image Used

CLARITY CHARACTERISTICS



KEY TO SYMBOLS

Red symbols indicate internal characteristics.
Green symbols indicate external characteristics.

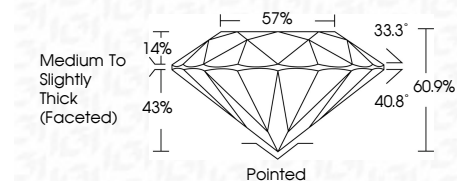
COLOR

D E F G H I J Faint Very Light Light

CLARITY

IF WS¹⁻² VS¹⁻² SI¹⁻² I¹⁻³

Internally Flawless Very Very Slightly Included Very Slightly Included Slightly Included Included



ADDITIONAL GRADING INFORMATION

Polish **EXCELLENT**

Symmetry **EXCELLENT**

Fluorescence **NONE**

Inscription(s) **IGI LG723570061**

Comments: This Laboratory Grown Diamond was created by Chemical Vapor Deposition (CVD) growth process.
Type IIa



IGI



July 22, 2025	IGI Report No LG723570061	1.61 CARAT	F	Pointed	EXCELLENT	EXCELLENT	NONE	IGI LG723570061
ROUND BRILLIANT	7.53 - 7.56 X 4.60 MM	Color Grade	VVS 2	Depth	60.9%	Table	57%	Medium To Slightly Thick (Faceted)
		Clarity Grade	IDEAL	Crown	33.3°	Pavilion	40.8°	Polish
		Cut Grade	IDEAL	Symmetry	EXCELLENT	Symmetry	EXCELLENT	Fluorescence
				Inscription(s)		Inscription(s)		

Comments: This Laboratory Grown Diamond was created by Chemical Vapor Deposition (CVD) growth process.
Type IIa