



ELECTRONIC COPY

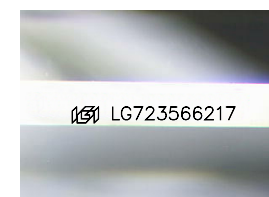
LG723566217
Report verification at igi.org



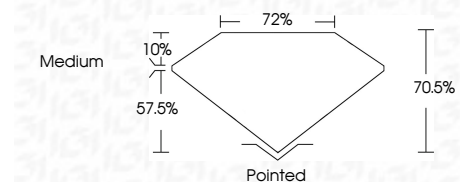
July 21, 2025
IGI Report Number **LG723566217**
Description **LABORATORY GROWN DIAMOND**
Shape and Cutting Style **PRINCESS CUT**
Measurements **6.87 X 6.79 X 4.79 MM**

GRADING RESULTS

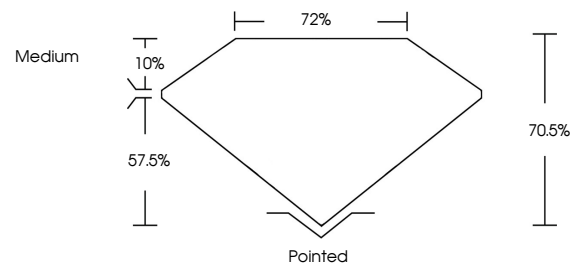
Carat Weight **1.94 CARAT**
Color Grade **F**
Clarity Grade **VVS 2**



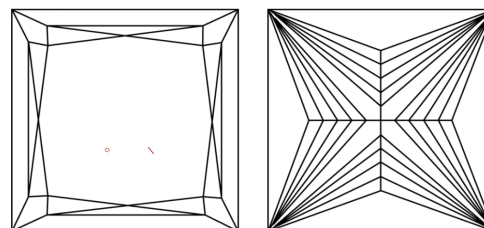
Sample Image Used



PROPORTIONS



CLARITY CHARACTERISTICS



KEY TO SYMBOLS

Red symbols indicate internal characteristics.
Green symbols indicate external characteristics.

COLOR

D E F G H I J Faint Very Light Light

CLARITY

IF	VS ¹⁻²	VS ¹⁻²	SI ¹⁻²	I ¹⁻³
Internally Flawless	Very Very Slightly Included	Very Slightly Included	Slightly Included	Included

ADDITIONAL GRADING INFORMATION

Polish **EXCELLENT**
Symmetry **EXCELLENT**
Fluorescence **NONE**
Inscription(s) **IGI LG723566217**
Comments: This Laboratory Grown Diamond was created by Chemical Vapor Deposition (CVD) growth process.
Type IIa



IGI



July 21, 2025
IGI Report No LG723566217
PRINCESS CUT
6.87 X 6.79 X 4.79 MM
1.94 CARAT
F
Color Grade
VVS 2
Clarity Grade
70.5%
72%
Medium
Pointed
EXCELLENT
EXCELLENT
NONE
IGI LG723566217
Comments: This Laboratory Grown Diamond was created by Chemical Vapor Deposition (CVD) growth process.
Type IIa