

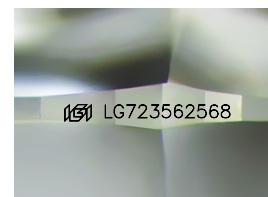
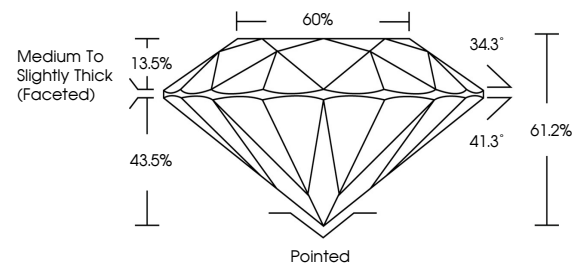


ELECTRONIC COPY

LABORATORY GROWN DIAMOND REPORT

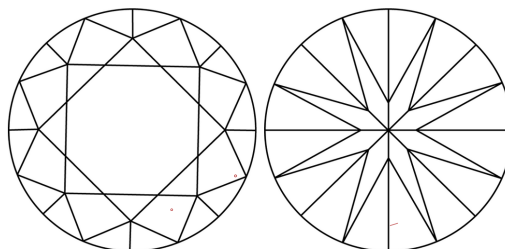
LG723562568
Report verification at igi.org

PROPORTIONS



Sample Image Used

CLARITY CHARACTERISTICS



KEY TO SYMBOLS

Red symbols indicate internal characteristics.
Green symbols indicate external characteristics.

COLOR

D E F G H I J Faint Very Light Light

CLARITY

IF WS¹⁻² VS¹⁻² S¹⁻² |¹⁻³

Internally Flawless	Very Very Slightly Included	Very Slightly Included	Slightly Included	Included
------------------------	--------------------------------	---------------------------	----------------------	----------



© IGI 2020, International Gemological Institute

FD - 10 20

www.igi.org

LABORATORY GROWN DIAMOND REPORT



July 23, 2025

IGI Report Number **LG723562568**Description **LABORATORY GROWN DIAMOND**Shape and Cutting Style **ROUND BRILLIANT**

Measurements 6.58 - 6.62 X 4.04 MM

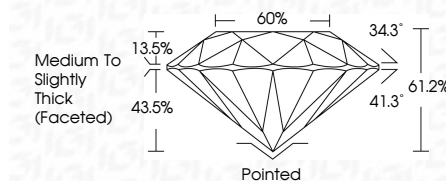
GRADING RESULTS

Carat Weight 1.10 CARAT

Color Grade D

Clarity Grade VS 1

Cut Grade **IDEAL**



ADDITIONAL GRADING INFORMATION

Polish **EXCELLENT**Symmetry **EXCELLENT**Fluorescence **NONE**Inscription(s) LG723562568

Comments: As Grown - No indication of post-growth treatment.

This Laboratory Grown Diamond was created by High Pressure High Temperature (HPHT) growth process.

Type II



JULY 23, 2025 GI Report No. LG723562558 ROUND BRILLIANT	1.10 CARAT Color Weight Color Grade Clarity Grade Cut Grade Depth Table Girdle Culet Symmetry Fluorescence Polarity Pairs Comments:	V8 1 IDEAL 61.2% 60% Medium to Slightly Thick (faceted) Pointed EXCELLENT EXCELLENT NONE #81 LG723562558	No indication of post-growth treatment. This Laboratory Crown Diamond was created by High Pressure High Temperature (HPHT) growth process.
---	--	--	--