



INTERNATIONAL GEMOLOGICAL INSTITUTE

ELECTRONIC COPY

LABORATORY GROWN DIAMOND REPORT

July 31, 2025
IGI Report Number **LG723556462**
Description **LABORATORY GROWN DIAMOND**
Shape and Cutting Style **HEART BRILLIANT**
Measurements **4.83 X 5.16 X 3.06 MM**

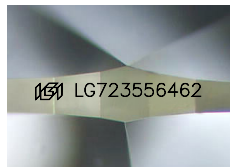
GRADING RESULTS

Carat Weight **0.45 CARAT**
Color Grade **FANCY INTENSE PINK**
Clarity Grade **VS 1**

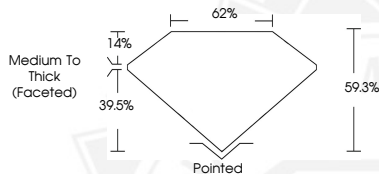
ADDITIONAL GRADING INFORMATION

Polish **VERY GOOD**
Symmetry **EXCELLENT**
Fluorescence **STRONG**
Inscription(s) **IGI LG723556462**

Comments: This Laboratory Grown Diamond was created by Chemical Vapor Deposition (CVD) growth process. Indications of post-growth treatment.



Sample Image Used



July 31, 2025

IGI Report Number **LG723556462**

HEART BRILLIANT

LABORATORY GROWN DIAMOND

4.83 X 5.16 X 3.06 MM

Carat Weight **0.45 CARAT**

Color Grade **FANCY INTENSE PINK**

Clarity Grade **VS 1**

Polish **VERY GOOD**

Symmetry **EXCELLENT**

Fluorescence **STRONG**

Inscription(s) **IGI LG723556462**

Comments: This Laboratory Grown Diamond was created by Chemical Vapor Deposition (CVD) growth process. Indications of post-growth treatment.



July 31, 2025

IGI Report Number **LG723556462**

HEART BRILLIANT

LABORATORY GROWN DIAMOND

4.83 X 5.16 X 3.06 MM

Carat Weight **0.45 CARAT**

Color Grade **FANCY INTENSE PINK**

Clarity Grade **VS 1**

Polish **VERY GOOD**

Symmetry **EXCELLENT**

Fluorescence **STRONG**

Inscription(s) **IGI LG723556462**

Comments: This Laboratory Grown Diamond was created by Chemical Vapor Deposition (CVD) growth process. Indications of post-growth treatment.



THIS DOCUMENT WAS PRODUCED WITH THE FOLLOWING SECURITY MEASURES: SPECIAL DOCUMENT PAPER, INK SCREENS, WATERMARK, BACKGROUND DESIGNS, HOLOGRAM AND OTHER SECURITY FEATURES NOT LISTED AND DO EXCEED DOCUMENT SECURITY INDUSTRY GUIDELINES.

For terms & conditions and to verify this report, please visit www.igi.org