



ELECTRONIC COPY

LG723553456
Report verification at igi.org



July 23, 2025

IGI Report Number **LG723553456**

Description **LABORATORY GROWN DIAMOND**

Shape and Cutting Style **PEAR BRILLIANT**

Measurements **10.43 X 6.38 X 3.98 MM**

GRADING RESULTS

Carat Weight **1.54 CARAT**

Color Grade **G**

Clarity Grade **VVS 2**

July 23, 2025
IGI Report Number **LG723553456**
Description **LABORATORY GROWN DIAMOND**
Shape and Cutting Style **PEAR BRILLIANT**
Measurements **10.43 X 6.38 X 3.98 MM**

GRADING RESULTS

Carat Weight **1.54 CARAT**

Color Grade **G**

Clarity Grade **VVS 2**

ADDITIONAL GRADING INFORMATION

Polish **EXCELLENT**

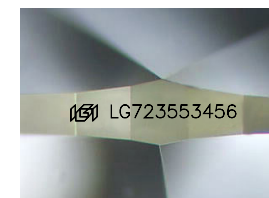
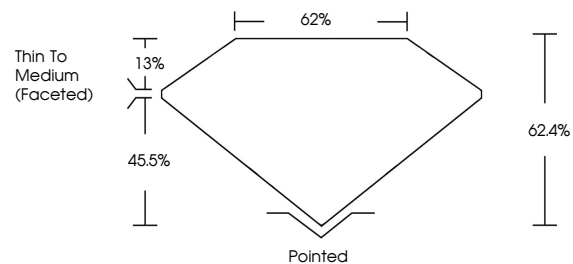
Symmetry **VERY GOOD**

Fluorescence **NONE**

Inscription(s) **IGI LG723553456**

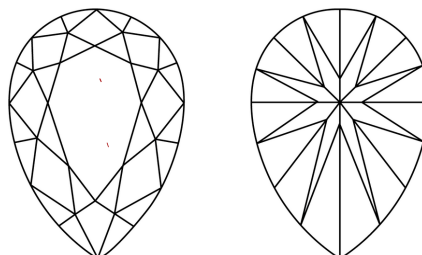
Comments: This Laboratory Grown Diamond was created by Chemical Vapor Deposition (CVD) growth process.
Type IIa

PROPORTIONS



Sample Image Used

CLARITY CHARACTERISTICS



KEY TO SYMBOLS

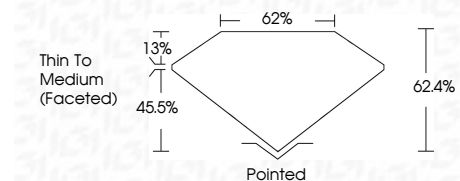
Red symbols indicate internal characteristics.
Green symbols indicate external characteristics.

COLOR

D E F G H I J Faint Very Light Light

CLARITY

IF	VS ¹⁻²	VS ¹⁻²	SI ¹⁻²	I ¹⁻³
Internally Flawless	Very Very Slightly Included	Very Slightly Included	Slightly Included	Included



ADDITIONAL GRADING INFORMATION

Polish **EXCELLENT**

Symmetry **VERY GOOD**

Fluorescence **NONE**

Inscription(s) **IGI LG723553456**

Comments: This Laboratory Grown Diamond was created by Chemical Vapor Deposition (CVD) growth process.
Type IIa



IGI



July 23, 2025
IGI Report No LG723553456
PEAR BRILLIANT

1.54 CARAT
G

10.43 X 6.38 X 3.98 MM

Carat Weight
Color Grade
Clarity Grade
Depth
Table
Girdle
Thin To Medium (Faceted)

1.54 CARAT
G
VVS 2
62.4%
62%

Pointed
EXCELLENT
VERY GOOD
NONE
IGI LG723553456

Culet
Polish
Symmetry
Fluorescence
Inscription(s)

Comments: This Laboratory Grown Diamond was created by Chemical Vapor Deposition (CVD) growth process.
Type IIa