



ELECTRONIC COPY

LG723551945  
Report verification at igi.org



July 22, 2025  
IGI Report Number **LG723551945**  
Description **LABORATORY GROWN DIAMOND**  
Shape and Cutting Style **CUT CORNERED RECTANGULAR MODIFIED BRILLIANT**  
Measurements **12.99 X 8.93 X 5.98 MM**  
**GRADING RESULTS**  
Carat Weight **6.12 CARATS**  
Color Grade **F**  
Clarity Grade **VS 1**

July 22, 2025  
IGI Report Number **LG723551945**  
Description **LABORATORY GROWN DIAMOND**  
Shape and Cutting Style **CUT CORNERED RECTANGULAR MODIFIED BRILLIANT**  
Measurements **12.99 X 8.93 X 5.98 MM**

GRADING RESULTS

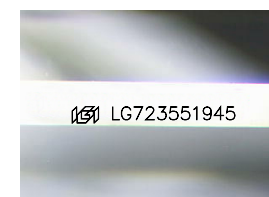
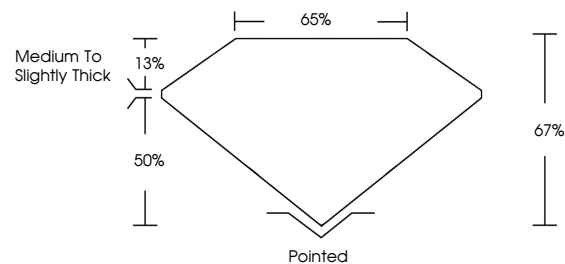
Carat Weight **6.12 CARATS**  
Color Grade **F**  
Clarity Grade **VS 1**

ADDITIONAL GRADING INFORMATION

Polish **EXCELLENT**  
Symmetry **EXCELLENT**  
Fluorescence **NONE**  
Inscription(s) **IGI LG723551945**

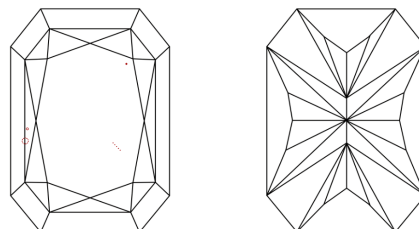
Comments: This Laboratory Grown Diamond was created by Chemical Vapor Deposition (CVD) growth process.  
Type IIa

PROPORTIONS



Sample Image Used

CLARITY CHARACTERISTICS



KEY TO SYMBOLS

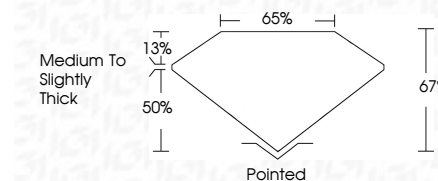
Red symbols indicate internal characteristics.  
Green symbols indicate external characteristics.

COLOR

D E F G H I J Faint Very Light Light

CLARITY

IF WS<sup>1-2</sup> VS<sup>1-2</sup> SI<sup>1-2</sup> I<sup>1-3</sup>  
Internally Flawless Very Very Slightly Included Very Slightly Included Slightly Included Included



ADDITIONAL GRADING INFORMATION

Polish **EXCELLENT**  
Symmetry **EXCELLENT**  
Fluorescence **NONE**  
Inscription(s) **IGI LG723551945**  
Comments: This Laboratory Grown Diamond was created by Chemical Vapor Deposition (CVD) growth process.  
Type IIa



July 22, 2025  
IGI Report No **LG723551945**  
**CUT CORNERED RECT. MODIFIED BRILLIANT**  
**12.99 X 8.93 X 5.98 MM**  
Carat Weight **6.12 CARATS**  
Color Grade **F**  
Clarity Grade **VS 1**  
Depth **67%**  
Table **65%**  
Girdle **Medium to Slightly Thick**  
Culet **Pointed**  
Polish **EXCELLENT**  
Symmetry **EXCELLENT**  
Fluorescence **NONE**  
Inscription(s) **IGI LG723551945**  
Comments: This Laboratory Grown Diamond was created by Chemical Vapor Deposition (CVD) growth process.  
Type IIa