

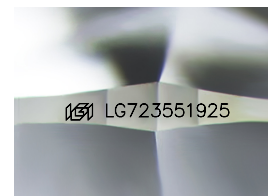
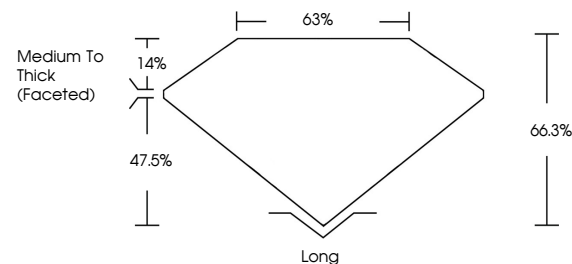


**ELECTRONIC COPY**

## LABORATORY GROWN DIAMOND REPORT

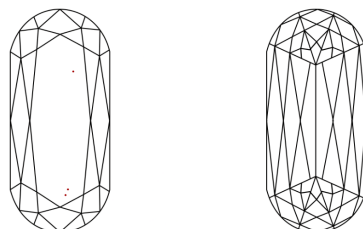
LG723551925  
Report verification at [igi.org](https://igi.org)

## PROPORTIONS



Sample Image Used

## CLARITY CHARACTERISTICS



## KEY TO SYMBOLS

Red symbols indicate internal characteristics.  
Green symbols indicate external characteristics.

## COLOR

D E F G H I J Faint Very Light Light

## CLARITY

IF	VS <sup>1-2</sup>	VS <sup>1-2</sup>	SI <sup>1-2</sup>	I <sup>1-3</sup>
Internally Flawless	Very Very Slightly Included	Very Slightly Included	Slightly Included	Included

## LABORATORY GROWN DIAMOND REPORT



July 21, 2025

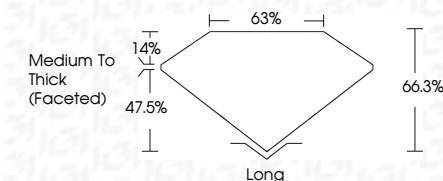
IGI Report Number **LG723551925**Description **LABORATORY GROWN DIAMOND**

Shape and Cutting Style      **MODIFIED RECTANGULAR  
CUSHION MIXED CUT**

Measurements 16.93 X 10.02 X 6.64 MM

## GRADING RESULTS

Carat Weight **10.21 CARATS**

Color Grade **F**Clarity Grade **VVS 2**

### ADDITIONAL GRADING INFORMATION

Polish EXCELLENT

Symmetry **EXCELLENT**Fluorescence **NONE**Inscription(s)  LG723551925

Comments: This Laboratory Grown Diamond was created by Chemical Vapor Deposition (CVD) growth process.  
Type IIa



© IGI 2020, International Gemological Institute

FD - 10 20

**www.igi.org**

THIS DOCUMENT WAS PRODUCED WITH THE FOLLOWING SECURITY MEASURES: SPECIAL DOCUMENT PAPER, INK SCREENS, WATERMARK BACKGROUND DESIGNS, HOLOGRAM AND OTHER SECURITY FEATURES NOT LISTED AND DO EXCEED DOCUMENT SECURITY INDUSTRY GUIDELINES

July 21, 2025	GI Report No. LG723551925	MODIFIED RECTANGULAR CUSHION	10.21 CARATS
		MIXED CUT	VVS 2
	6.93 X 10.02 X 6.64 MM		66.3%
			65%
			Medium to Thick (Faceted)
			Long
			EXCELLENT
			EXCELLENT
			NONE
			65# LG723551925

Comments:  
 The Laboratory Grown Diamond was  
 created by Chemical Vapor Deposition  
 (CVD) growth process.  
 type IIa