



ELECTRONIC COPY

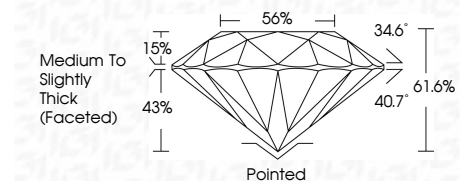
LG723551692
Report verification at igi.org



July 31, 2025
IGI Report Number LG723551692
Description LABORATORY GROWN DIAMOND
Shape and Cutting Style ROUND BRILLIANT
Measurements 8.90 - 8.97 X 5.51 MM

GRADING RESULTS

Carat Weight 2.72 CARATS
Color Grade FANCY VIVID BLUE
Clarity Grade VVS 2
Cut Grade IDEAL

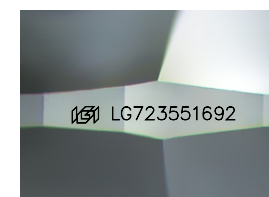


ADDITIONAL GRADING INFORMATION

Polish EXCELLENT
Symmetry EXCELLENT
Fluorescence NONE
Inscription(s) LG723551692
Comments: HEARTS & ARROWS
This Laboratory Grown Diamond was created by High Pressure High Temperature (HPHT) growth process. Indications of post-growth treatment.

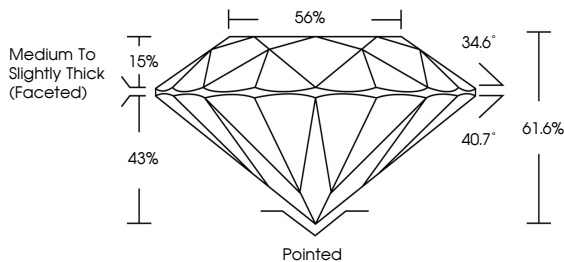


July 31, 2025
IGI Report No LG723551692
ROUND BRILLIANT
8.90 - 8.97 X 5.51 MM
2.72 CARATS
FANCY VIVID BLUE
VVS 2
IDEAL
56%
Medium To Slightly Thick (Faceted)
Pointed
EXCELLENT
EXCELLENT
NONE
IGI LG723551692
Comments: HEARTS & ARROWS
This Laboratory Grown Diamond was created by High Pressure High Temperature (HPHT) growth process. Indications of post-growth treatment.

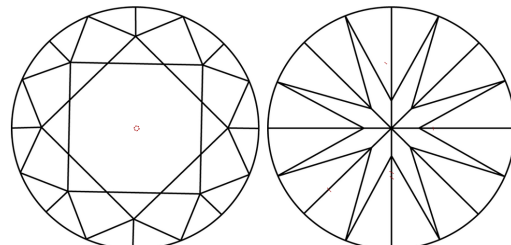


Sample Image Used

PROPORTIONS



CLARITY CHARACTERISTICS



KEY TO SYMBOLS

Red symbols indicate internal characteristics.
Green symbols indicate external characteristics.



COLOR

Table with color grades: D, E, F, G, H, I, J, Faint, Very Light, Light

CLARITY

Table with clarity grades: IF, VVS 1-2, VS 1-2, SI 1-2, I 1-3, Internally Flawless, Very Very Slightly Included, Very Slightly Included, Slightly Included, Included

