



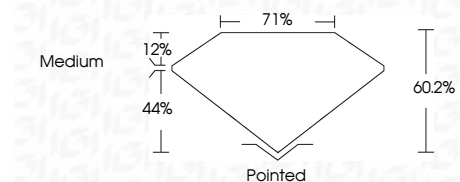
ELECTRONIC COPY

LG723549396
Report verification at igi.org



July 18, 2025
IGI Report Number **LG723549396**
Description **LABORATORY GROWN DIAMOND**
Shape and Cutting Style **OCTAGONAL STEP CUT**
Measurements **6.23 X 6.18 X 3.72 MM**

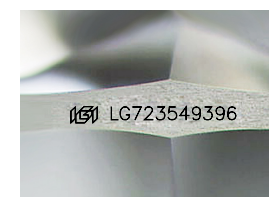
GRADING RESULTS
Carat Weight **1.02 CARAT**
Color Grade **D**
Clarity Grade **VVS 2**



ADDITIONAL GRADING INFORMATION
Polish **EXCELLENT**
Symmetry **EXCELLENT**
Fluorescence **NONE**
Inscription(s) **IGI LG723549396**
Comments: This Laboratory Grown Diamond was created by Chemical Vapor Deposition (CVD) growth process. Type IIa

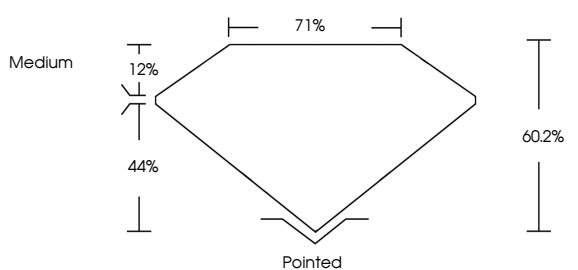


July 18, 2025
IGI Report No LG723549396
OCTAGONAL STEP CUT
6.23 X 6.18 X 3.72 MM
1.02 CARAT
D
VVS 2
60.2%
71%
Medium
Pointed
EXCELLENT
EXCELLENT
NONE
IGI LG723549396
Comments: This Laboratory Grown Diamond was created by Chemical Vapor Deposition (CVD) growth process. Type IIa

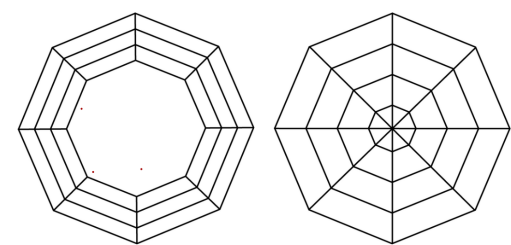


Sample Image Used

PROPORTIONS



CLARITY CHARACTERISTICS



KEY TO SYMBOLS
Red symbols indicate internal characteristics.
Green symbols indicate external characteristics.

COLOR

D	E	F	G	H	I	J	Faint	Very Light	Light
---	---	---	---	---	---	---	-------	------------	-------

CLARITY

IF	VS ¹⁻²	VS ¹⁻²	SI ¹⁻²	I ¹⁻³
Internally Flawless	Very Very Slightly Included	Very Slightly Included	Slightly Included	Included

