



**ELECTRONIC COPY**

LG723549367  
Report verification at igi.org



July 19, 2025

IGI Report Number **LG723549367**

Description **LABORATORY GROWN DIAMOND**

Shape and Cutting Style **EMERALD CUT**

Measurements **8.45 X 5.95 X 4.08 MM**

**GRADING RESULTS**

Carat Weight **2.05 CARATS**

Color Grade **D**

Clarity Grade **VVS 2**

**LABORATORY GROWN DIAMOND REPORT**

July 19, 2025

IGI Report Number **LG723549367**

Description **LABORATORY GROWN DIAMOND**

Shape and Cutting Style **EMERALD CUT**

Measurements **8.45 X 5.95 X 4.08 MM**

**GRADING RESULTS**

Carat Weight **2.05 CARATS**

Color Grade **D**

Clarity Grade **VVS 2**

**ADDITIONAL GRADING INFORMATION**

Polish **EXCELLENT**

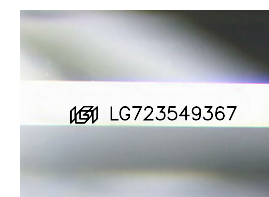
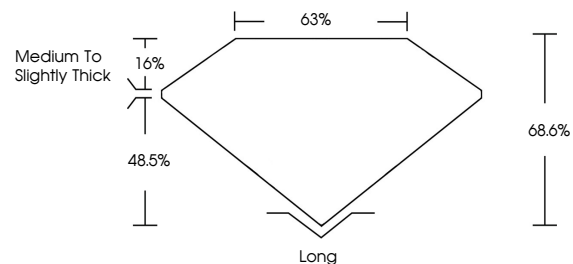
Symmetry **EXCELLENT**

Fluorescence **NONE**

Inscription(s) **IGI LG723549367**

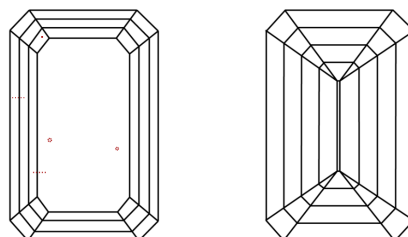
Comments: This Laboratory Grown Diamond was created by Chemical Vapor Deposition (CVD) growth process. Type IIa

**PROPORTIONS**



Sample Image Used

**CLARITY CHARACTERISTICS**



**KEY TO SYMBOLS**

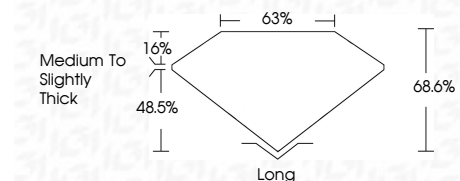
Red symbols indicate internal characteristics.  
Green symbols indicate external characteristics.

**COLOR**

D E F G H I J Faint Very Light Light

**CLARITY**

| IF                  | VS <sup>1-2</sup>           | VS <sup>1-2</sup>      | SI <sup>1-2</sup> | I <sup>1-3</sup> |
|---------------------|-----------------------------|------------------------|-------------------|------------------|
| Internally Flawless | Very Very Slightly Included | Very Slightly Included | Slightly Included | Included         |



**ADDITIONAL GRADING INFORMATION**

Polish **EXCELLENT**

Symmetry **EXCELLENT**

Fluorescence **NONE**

Inscription(s) **IGI LG723549367**

Comments: This Laboratory Grown Diamond was created by Chemical Vapor Deposition (CVD) growth process. Type IIa



**IGI**



July 19, 2025  
IGI Report No. LG723549367  
**EMERALD CUT**  
8.45 X 5.95 X 4.08 MM  
2.05 CARATS  
D  
VVS 2  
68.6%  
63%  
Medium to Slightly Thick  
Long  
EXCELLENT  
EXCELLENT  
NONE  
IGI LG723549367

Comments: This Laboratory Grown Diamond was created by Chemical Vapor Deposition (CVD) growth process. Type IIa