



ELECTRONIC COPY

LG723547324
Report verification at igi.org



August 6, 2025

IGI Report Number **LG723547324**

Description **LABORATORY GROWN DIAMOND**

Shape and Cutting Style **OLD EUROPEAN CUT**

Measurements **6.67 - 6.71 X 4.30 MM**

GRADING RESULTS

Carat Weight **1.24 CARAT**

Color Grade **FANCY VIVID GREEN**

Clarity Grade **VS 2**

August 6, 2025

IGI Report Number **LG723547324**

Description **LABORATORY GROWN DIAMOND**

Shape and Cutting Style **OLD EUROPEAN CUT**

Measurements **6.67 - 6.71 X 4.30 MM**

GRADING RESULTS

Carat Weight **1.24 CARAT**

Color Grade **FANCY VIVID GREEN**

Clarity Grade **VS 2**

ADDITIONAL GRADING INFORMATION

Polish **VERY GOOD**

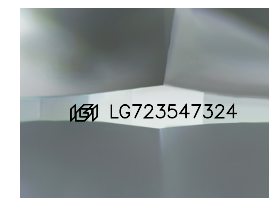
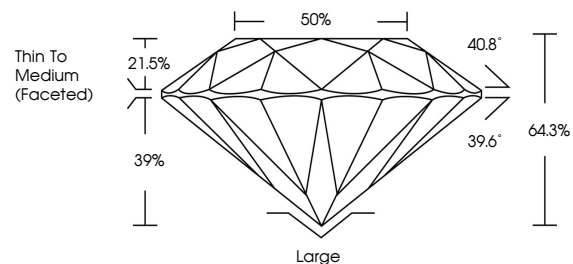
Symmetry **EXCELLENT**

Fluorescence **NONE**

Inscription(s) **IGI LG723547324**

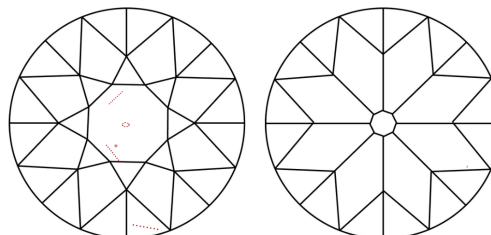
Comments: This Laboratory Grown Diamond was created by Chemical Vapor Deposition (CVD) growth process. Indications of post-growth treatment.

PROPORTIONS



Sample Image Used

CLARITY CHARACTERISTICS



KEY TO SYMBOLS

Red symbols indicate internal characteristics.
Green symbols indicate external characteristics.

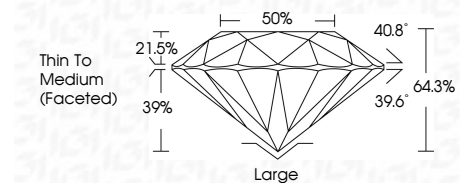
COLOR

D E F G H I J Faint Very Light Light

CLARITY

IF VS¹⁻² VS¹⁻² SI¹⁻² I¹⁻³

Internally Flawless Very Very Slightly Included Very Slightly Included Slightly Included Included



ADDITIONAL GRADING INFORMATION

Polish **VERY GOOD**

Symmetry **EXCELLENT**

Fluorescence **NONE**

Inscription(s) **IGI LG723547324**

Comments: This Laboratory Grown Diamond was created by Chemical Vapor Deposition (CVD) growth process. Indications of post-growth treatment.



| | | | | | | | | | | | | |
|---------------------------|---------------------------|-----------------------|-------------------|---------------|-------|--------|--------------------------|--------|-----------|--------------|----------------|--|
| August 6, 2025 | IGI Report No LG723547324 | 1.24 CARAT | FANCY VIVID GREEN | VS 2 | 64.3% | 50% | Thin to Medium (Faceted) | Large | VERY GOOD | EXCELLENT | NONE | IGI LG723547324 |
| IGI Report No LG723547324 | OLD EUROPEAN CUT | 6.67 - 6.71 X 4.30 MM | Color Grade | Clarity Grade | Table | Girdle | Culet | Polish | Symmetry | Fluorescence | Inscription(s) | Comments: This Laboratory Grown Diamond was created by Chemical Vapor Deposition (CVD) growth process. Indications of post-growth treatment. |