



LABORATORY GROWN DIAMOND REPORT

July 25, 2025
 IGI Report Number **LG723547001**
 Description **LABORATORY GROWN DIAMOND**
 Shape and Cutting Style **LOZENGE STEP CUT**
 Measurements **8.98 X 5.41 X 2.59 MM**

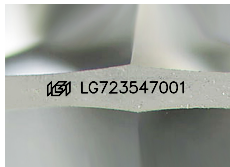
GRADING RESULTS

Carat Weight **0.60 CARAT**
 Color Grade **E**
 Clarity Grade **VS 1**

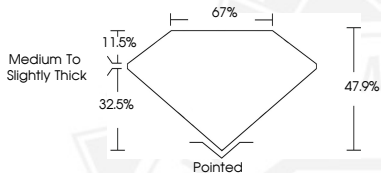
ADDITIONAL GRADING INFORMATION

Polish **VERY GOOD**
 Symmetry **VERY GOOD**
 Fluorescence **NONE**
 Inscription(s) **IGI LG723547001**

Comments: This Laboratory Grown Diamond was created by Chemical Vapor Deposition (CVD) growth process. Type IIa



Sample Image Used



July 25, 2025
 IGI Report Number **LG723547001**
 LOZENGE STEP CUT
 LABORATORY GROWN DIAMOND
 8.98 X 5.41 X 2.59 MM
 Carat Weight **0.60 CARAT**
 Color Grade **E**
 Clarity Grade **VS 1**
 Polish **VERY GOOD**
 Symmetry **VERY GOOD**
 Fluorescence **NONE**
 Inscription(s) **IGI LG723547001**
 Comments: This Laboratory Grown Diamond was created by Chemical Vapor Deposition (CVD) growth process. Type IIa



July 25, 2025
 IGI Report Number **LG723547001**
 LOZENGE STEP CUT
 LABORATORY GROWN DIAMOND
 8.98 X 5.41 X 2.59 MM
 Carat Weight **0.60 CARAT**
 Color Grade **E**
 Clarity Grade **VS 1**
 Polish **VERY GOOD**
 Symmetry **VERY GOOD**
 Fluorescence **NONE**
 Inscription(s) **IGI LG723547001**
 Comments: This Laboratory Grown Diamond was created by Chemical Vapor Deposition (CVD) growth process. Type IIa



THIS DOCUMENT WAS PRODUCED WITH THE FOLLOWING SECURITY MEASURES: SPECIAL DOCUMENT PAPER, INK SCREENS, WATERMARK, BACKGROUND DESIGNS, HOLOGRAM AND OTHER SECURITY FEATURES NOT LISTED AND DO EXCEED DOCUMENT SECURITY INDUSTRY GUIDELINES.